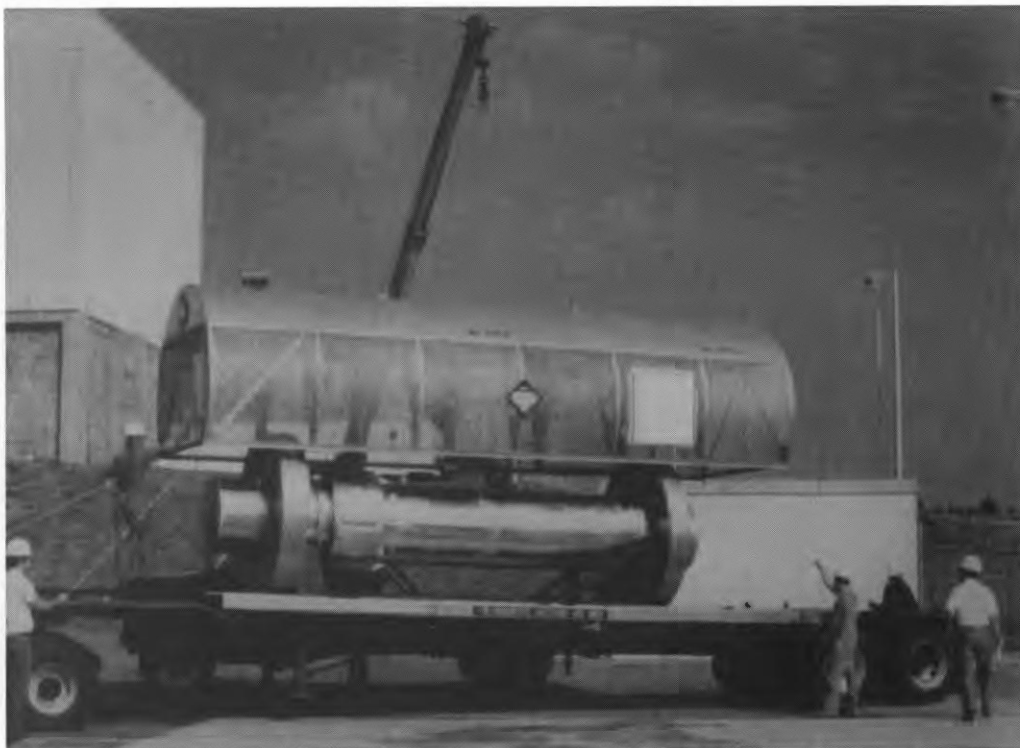




DOE/NTP-014

# Transportation Packaging Quick Facts

National Transportation Program



**Cask:** NLI-1/2

**Manufacturer:** NAC International

**Certification:** Certified for domestic use; Certification USA/9010/B( )F (expires April 30, 2001)

**General Description:**

**Packaging Type:** B

**Gross Weight:** 49,250 pounds (22,340 kilograms) loaded maximum

**Overall Dimensions:** Length 195.2 inches (495.8 centimeters), Diameter 47.1 inches (119.6 centimeters)

**Cavity Size:** Length 178 inches (452 centimeters), Diameter 13.4 inches (34 centimeters)

**Mode of Transport:** Truck

**Use:** NLI-1/2 cask is a steel-encased, lead- and depleted uranium-shielded transportation cask. The cask body consists of a 0.5-inch- (13-millimeter-) thick stainless steel inner shell, a 2.7-inch- (70-millimeter-) thick depleted uranium gamma shield, a 2.1-inch- (54-millimeter-) thick lead gamma shield, a 0.9-inch- (22-millimeter-) thick stainless steel outer shell, and a neutron shield tank. The NLI-1/2 currently is authorized for transport of the following types of spent nuclear fuel: one pressurized water reactor assembly, two boiling water reactor assemblies, consolidated light water reactor fuel, or metallic rods. An amendment for material test reactor (MTR) fuel is in progress. It has a design heat rejection of 10.6 kilowatts. Five NLI-1/2 casks are available for use.

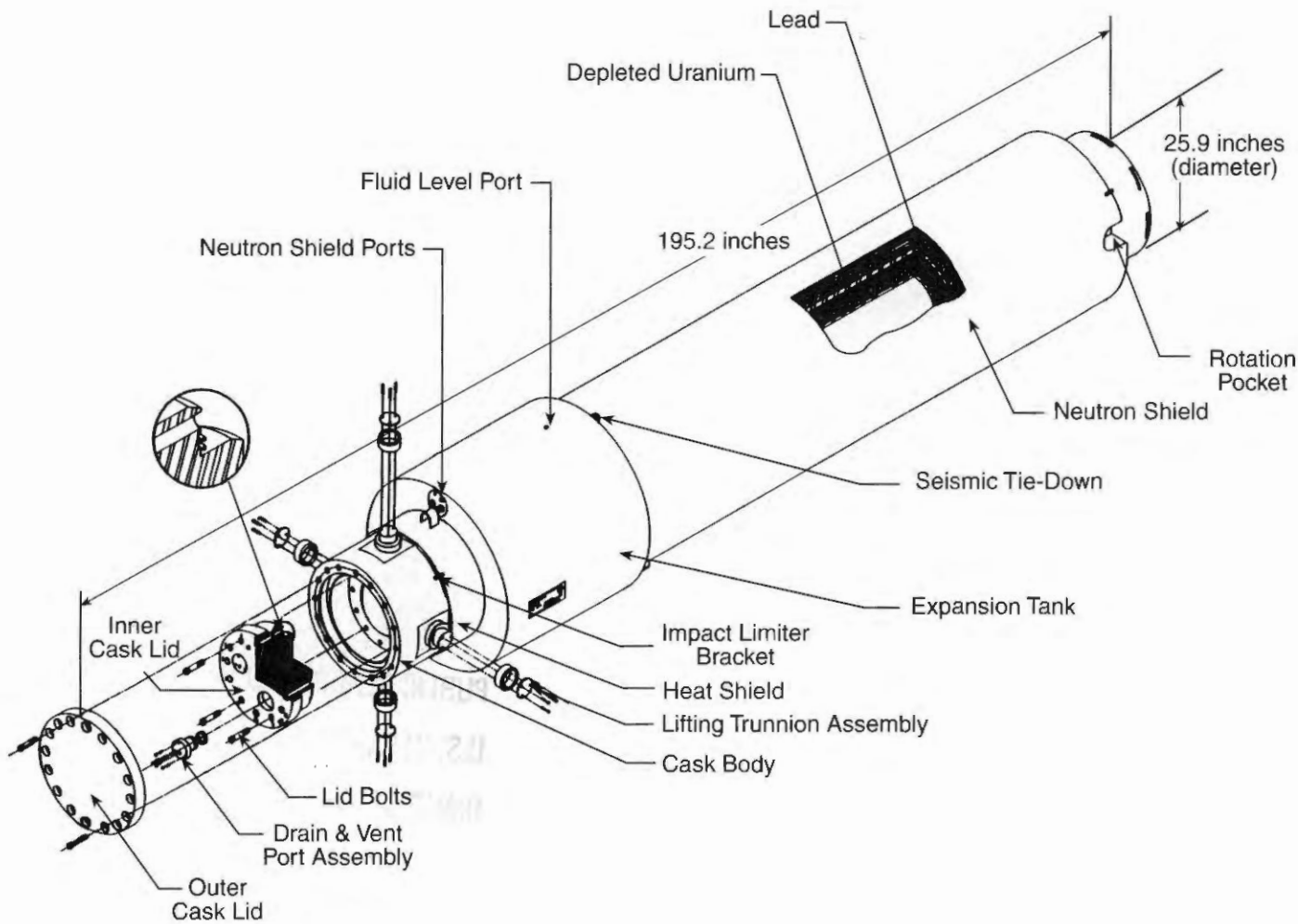
**Frequency of Use:** 30 to 50 days per year

**Loading Process:** Wet immersion or dry, using the NAC Dry Transfer System

**Owner:** NAC International  
Norcross, GA

PUBLIC READING ROOM  
U.S. DEPARTMENT OF ENERGY  
IDAHO OPERATIONS OFFICE





## NLI-1/2 Shipping Cask

Additional information on DOE's National Transportation Program may be obtained from:

National Transportation Program  
 U.S. Department of Energy  
 Albuquerque Operations Office  
 P.O. Box 5400, MS SC-5  
 Albuquerque, NM 87185-5400

Phone: 505-845-6134  
 Fax: 505-845-5508

Website:  
<http://www.ntp.doe.gov/>

DOE Center for Environmental  
 Management Information  
 P.O. Box 23769  
 Washington, DC 20026-3769

1-800-7EM-DATA  
 1-800-736-3282

Website:  
<http://www.em.doe.gov/>

Transportation Resource Exchange Center  
 ATR Institute  
 University of New Mexico  
 1001 University Blvd., SE  
 Albuquerque, NM 87106-4342

Phone: 1-877-287-TREX (8739)  
 Fax: 505-246-6001  
 email: [trex@unm.edu](mailto:trex@unm.edu)

Website:  
<http://www.unm.edu/~trex>