

# **Enhanced Component Performance Study: Turbine-Driven Pumps 1998–2013**

John A. Schroeder

February 2015



The INL is a U.S. Department of Energy National Laboratory  
operated by Battelle Energy Alliance

#### NOTICE

This information was prepared as an account of work sponsored by an agency of the U.S. Government. Neither the U.S. Government nor any agency thereof, nor any of their employees, makes any warranty, express or implied, or assumes any legal liability or responsibility for any third party's use, or the results of such use, of any information, apparatus, product, or process disclosed herein, or represents that its use by such third party would not infringe privately owned rights. The views expressed herein are not necessarily those of the U.S. Nuclear Regulatory Commission.

**Enhanced Component Performance Study:  
Turbine-Driven Pumps  
1998–2013**

**John A. Schroeder**

**Update Completed December 2014**

**Idaho National Laboratory  
Risk Assessment and Management Services Department  
Idaho Falls, Idaho 83415**

**<http://www.inl.gov>**

**Prepared for the  
Division of Risk Assessment  
Office of Nuclear Regulatory Research  
U.S. Nuclear Regulatory Commission  
NRC Agreement Number NRC-HQ-14-D-0018**



## **ABSTRACT**

This report presents an enhanced performance evaluation of turbine-driven pumps (TDPs) at U.S. commercial nuclear power plants. The data used in this study are based on the operating experience failure reports from fiscal year 1998 through 2013 for the component reliability as reported in the Institute of Nuclear Power Operations Consolidated Events Database. The TDP failure modes considered are failure to start, failure to run less than or equal to 1 hour, failure to run more than 1 hour, and (for normally running systems) failure to run. The component reliability estimates and the reliability data are trended for the most recent 10-year period while yearly estimates for reliability are provided for the entire active period. Statistically significant increasing trends were identified for TDP unavailability, for frequency of start demands for standby TDPs, and for run hours in the first hour after start. Statistically significant decreasing trends were identified for start demands for normally running TDPs, and for run hours per reactor critical year for normally running TDPs.



# CONTENTS

ABSTRACT.....	iii
ACRONYMS.....	ix
1. INTRODUCTION .....	1
2. SUMMARY OF FINDINGS .....	3
3. FAILURE PROBABILITIES AND FAILURE RATES .....	5
3.1 Overview .....	5
3.2 TDP Failure Probability and Failure Rate Trends .....	5
4. UNAVAILABILITY.....	9
4.1 Overview .....	9
4.2 TDP Unavailability Trends.....	9
5. TDP UNRELIABILITY TRENDS .....	11
6. ENGINEERING TRENDS .....	13
6.1 Standby TDP Engineering Trends.....	13
6.2 Normally Running TDP Engineering Trends .....	16
6.3 Comparison of ICES TDP Unplanned Demand Results with Industry Results .....	20
6.4 TDP Engineering Analysis by Failure Modes .....	21
7. TDP ASSEMBLY DESCRIPTION.....	27
8. DATA TABLES .....	29
9. REFERENCES.....	47

# FIGURES

1. Failure probability estimate trend for standby systems, industry-wide TDP FTS trend.....	6
2. Failure probability estimate trend for standby systems, industry-wide TDP FTR $\leq$ 1H trend. ....	6
3. Failure rate estimate trend for standby systems, industry-wide TDP FTR $>$ 1H trend.....	7
4. Failure probability estimate trend for normally running systems (MFW), industry-wide TDP FTS trend.....	7

5. Failure rate estimate trend for normally running systems (MFW), industry-wide TDP FTR trend.....	8
6. Pooled AFW, HPCI, and RCIC TDP UA trend.....	10
7. Standby systems, industry-wide TDP unreliability trend (8-hour mission).....	11
8. Normally running systems, industry-wide TDP unreliability trend (8-hour mission). ....	12
9. Frequency (events per reactor year) of start demands, standby TDPs.....	13
10. Standby TDP run hours per reactor critical year of run $\leq$ 1H hours. ....	14
11. Standby TDP run hours per reactor critical year.....	14
12. Frequency (events per reactor year) of FTS events, standby TDPs.....	15
13. Frequency (events per reactor year) of $FTR \leq 1H$ events, standby TDPs. ....	15
14. Frequency (events per reactor year) of $FTR > 1H$ events, standby TDPs. ....	16
15. Frequency (events per reactor year) of start demands, normally running TDPs.....	17
16. Normally running TDP run hours per reactor year. ....	17
17. Frequency (events per reactor year) of FTS events, normally running TDPs.....	18
18. Frequency (events per reactor year) of FTR events, normally running TDPs. ....	18
19. TDP failure event breakdown by subcomponent, failure mode, and operational status. ....	23
20. TDP failure event breakdown by cause group, failure mode, and operational status. ....	24
21. TDP failure event breakdown by failure detection method, failure mode, and operational status.....	25
22. TDP failure event breakdown by recoverability determination, failure mode, and operational status.....	26

## TABLES

1. TDP systems.....	5
2. Industry-wide distributions of $p$ (failure probability) and $\lambda$ (hourly rate) for TDPs.....	5
3. Industry-wide distributions of unavailability for TDPs.....	9
4. Summary of TDP failure counts for the FTS failure mode over time by system. ....	19
5. Summary of TDP failure counts for the $FTR \leq 1H$ failure mode over time by system. ....	19



6. Summary of TDP failure counts for the FTR>1H and FTR failure mode over time by system. ....	19
7. Standby TDP unplanned demand performance comparison with industry-average performance. ....	20
8. Component failure cause groups. ....	22
9. Plot data for Figure 1, standby TDP FTS industry trend. ....	29
10. Plot data for Figure 2, standby TDP FTR≤1H industry trend. ....	30
11. Plot data for Figure 3, standby TDP FTR>1H industry trend. ....	31
12. Plot data for Figure 4, normally running TDP FTS industry trend. ....	32
13. Plot data for Figure 5, normally running TDP FTR industry trend. ....	33
14. Plot data for Figure 6, all standby TDP unavailability trend. ....	34
15. Plot data for Figure 7, standby TDP unreliability trend. ....	35
16. Plot data for Figure 8, NR TDP unreliability trend. ....	36
17. Plot data for Figure 9, standby TDP start demands trend. ....	37
18. Plot data for Figure 10, standby TDP run ≤1 hour run-hours trend. ....	38
19. Plot data for Figure 11, standby TDP run > 1 hour run-hours trend. ....	39
20. Plot data for Figure 12, standby TDP FTS events trend. ....	40
21. Plot data for Figure 13, standby TDP FTR≤1H events trend. ....	41
22. Plot data for Figure 14, standby TDP FTR>1H events trend. ....	42
23. Plot data for Figure 15, normally running TDP start demands trend. ....	43
24. Plot data for Figure 16, normally running TDP run hours trend. ....	44
25. Plot data for Figure 17, normally running TDP FTS events trend. ....	45
26. Plot data for Figure 18, normally running TDP FTR events trend. ....	46



## ACRONYMS

CNID	constrained noninformative prior distribution
EPIX	Equipment Performance and Information Exchange
EPS	emergency power supply
ESF	engineered safety feature
FTR $\leq$ 1H	failure to run $\leq$ 1 hour
FTR $>$ 1H	failure to run $>$ 1 hour
FTR	failure to run
FTS	failure to start
FY	fiscal year
HPCS	high-pressure core spray
ICES	INPO Consolidated Events Database
INPO	Institute of Nuclear Power Operations
MSPI	Mitigating Systems Performance Index
PRA	probabilistic risk assessment
TDP	turbine-driven pump
UA	unavailability



# Enhanced Component Performance Study: Turbine-Driven Pumps 1998–2013

## 1. INTRODUCTION

This report presents an enhanced performance evaluation of turbine-driven pumps (TDPs) at U.S. commercial nuclear power plants. This report does not estimate values for use in probabilistic risk assessments (PRAs), but does evaluate component performance over time. The [2010 Component Reliability Update](#) (Reference 1), which is an update to Reference 2 ([NUREG/CR-6928](#)), reports the TDP unreliability estimates using Institute of Nuclear Power Operations (INPO) Consolidated Events Database (ICES) data from 1998 through 2010 and maintenance unavailability (UA) performance data using Mitigating Systems Performance Index (MSPI) Basis Document data from 2002 through 2010 for use in probabilistic risk assessments.

The data used in this study are based on the operating experience failure reports from fiscal year (FY)-98 through FY-13 as reported in ICES. The TDP failure modes considered are for standby systems: failure to start (FTS), failure to run  $\leq 1$  hour ( $FTR \leq 1H$ ), failure to run  $> 1$  hour ( $FTR > 1H$ ), and for normally running systems: FTS and failure to run (FTR). TDP train maintenance unavailability data for trending are from the same time period, as reported in the Reactor Oversight Program and ICES. In addition to the presentation of the component failure mode data and the UA data, an 8-hour unreliability is calculated and trended. The component reliability estimates and the reliability data are trended for the most recent 10-year period while yearly estimates for reliability are provided for the entire active period.

Previously, the study relied on operating experience obtained from licensee event reports, Nuclear Plant Reliability Data System, and ICES. The ICES database (which includes as a subset the MSPI designated devices) has matured to the point where component availability and reliability can be estimated with a higher degree of assurance of accuracy. In addition, the population of data is much larger than the population used in the previous study.

The objective of the effort for the updated component performance studies is to obtain annual performance trends of failure rates and probabilities. An overview of the trending methods, glossary of terms, and abbreviations can be found in the [Overview and Reference document](#) on the Reactor Operational Experience Results and Databases web page.

The objective of the enhanced component performance study is to present an analysis of factors that could influence the system and component trends in addition to annual performance trends of failure rates and probabilities. The factors analyzed for the TDP component are the differences in failures between total demands and actual unplanned [engineered safety feature (ESF)] demands (Section 6.3). Statistical analyses of the differences are performed and results showing whether pooling is acceptable across these factors are shown. In addition, engineering analyses were performed with respect to time period and failure mode (Section 6.4). The factors analyzed are sub-component, failure cause, recovery, and detection method.



## 2. SUMMARY OF FINDINGS

The results of this study are summarized in this section. Of particular interest is the existence of any statistically significant<sup>a</sup> increasing trends.

In this update the following increasing trends were identified:

- A highly statistically significant increasing trend for TDP unavailability (Figure 6).
- A highly statistically significant increasing trend for start demands for standby TDPs (Figure 9).
- A highly statistically significant increasing trend for run hours for the first hour for standby TDPs (Figure 10).

Figures 9 and 10 are providing essentially the same information since each start demand is assumed to result in the accumulation of one hour towards the exposure for  $FTR \leq 1H$ .

In this update the following decreasing trends were identified:

- A highly statistically significant decreasing trend for start demands for normally running TDPs (Figure 15).
- A highly statistically significant decreasing trend for run hours per reactor critical year for normally running TDPs (Figure 16).

Both of these decreasing trends are only significant because of the consistent (lack of variation) values year-to-year. The actual decrease is less than 5% for both trends over the most recent 10-year period.

An ongoing concern in the industry is whether industry data adequately represent standby component performance during unplanned (ESF) demands. Section 6.3 shows the results of the consistency check between industry data and ESF detected failure data. The consistency checks using unplanned demand data indicate that FTS and  $FTR > 1H$  are consistent with the industry-average distribution. The unplanned demand observation for the  $FTR \leq 1H$  failure mode is not consistent and lies in the lower 95% (degraded performance) meaning that the TDP performs worse than the industry average distribution for the  $FTR \leq 1H$  failure mode.

---

a. Statistically significant is defined in terms of the 'p-value.' A p-value is a probability indicating whether to accept or reject the null hypothesis that there is no trend in the data. P-values of less than or equal to 0.05 indicate that we are 95% confident that there is a trend in the data (reject the null hypothesis of no trend.) By convention, we use the "Michelin Guide" scale: p-value < 0.05 (statistically significant), p-value < 0.01 (highly statistically significant); p-value < 0.001 (extremely statistically significant).





### 3. FAILURE PROBABILITIES AND FAILURE RATES

#### 3.1 Overview

The industry-wide failure probabilities and failure rates of TDPs have been calculated from the operating experience for FTS,  $FTR \leq 1H$ ,  $FTR > 1H$ , and FTR. The TDP data set obtained from ICES includes TDPs in the systems listed in Table 1. Table 2 shows industry-wide failure probability and failure rate results for the TDP from Reference 1.

Table 1. TDP systems.

System	Description	Standby	Normally Running
AFW	Auxiliary feedwater	74	
HPCI	High pressure coolant injection	28	
MFW	Main feedwater		40
RCIC	Reactor core isolation cooling	31	
<b>Total</b>		<b>133</b>	<b>40</b>

The TDPs are assumed to operate both when the reactor is critical and during shutdown periods with sufficient steam pressure. The number of TDPs in operation is assumed to be constant throughout the study period. All demand types are considered—testing, non-testing, and, as applicable, ESF demands.

Table 2. Industry-wide distributions of  $p$  (failure probability) and  $\lambda$  (hourly rate) for TDPs.

Operation	Failure Mode	5%	Median	Mean	95%	Distribution		
						Type	$\alpha$	$\beta$
Standby	FTS	2.88E-04	4.41E-03	6.49E-03	1.98E-02	Beta	0.94	1.441E+02
	$FTR \leq 1H$	2.07E-04	3.03E-03	4.43E-03	1.34E-02	Beta	0.96	2.164E+02
	$FTR > 1H$	9.10E-04	1.52E-03	1.56E-03	2.35E-03	Gamma	12.50	8.028E+03
Running/ Alternating	FTS	3.25E-04	5.89E-03	8.93E-03	2.79E-02	Beta	0.88	9.728E+01
	FTR	1.44E-06	7.67E-06	9.34E-06	2.29E-05	Gamma	1.79	1.919E+05

#### 3.2 TDP Failure Probability and Failure Rate Trends

The trends are shown for industry standby and for industry normally running results. Trends in the standby TDP failure probabilities and failure rates are shown in Figure 1 to Figure 3. The data for the trend plots are contained in Table 9 to Table 11. The standby systems from Table 1 are trended together for each failure mode. Trends in the failure probabilities and failure rates for normally operating TDPs are shown in Figure 4 and Figure 5. The data for the trend plots are contained in Table 12 and Table 13.

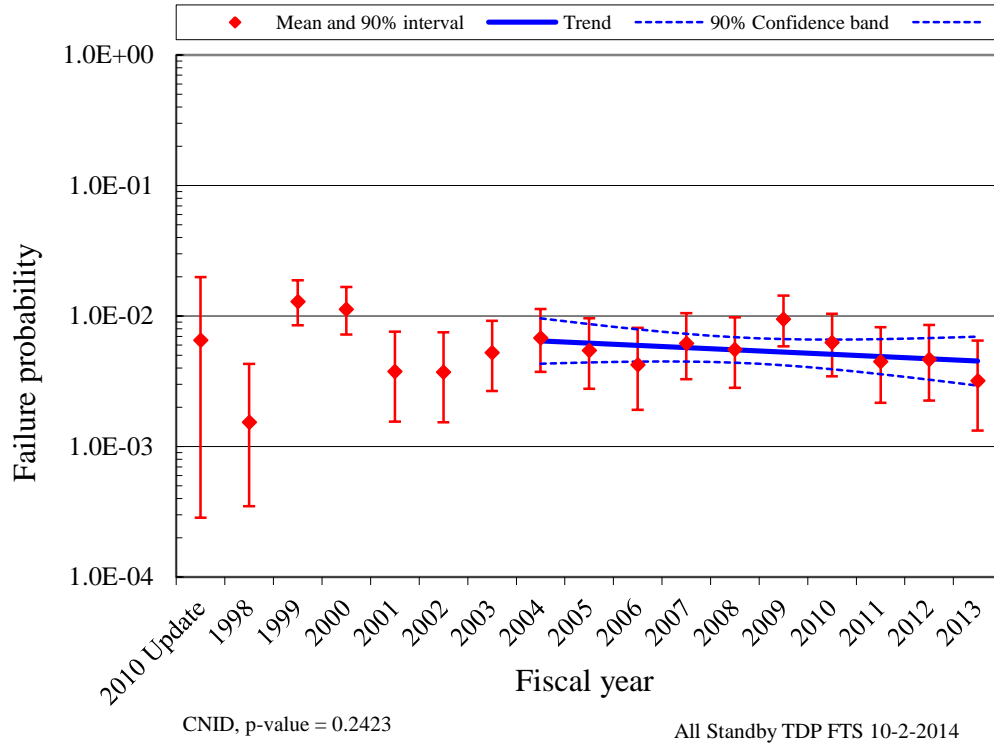


Figure 1. Failure probability estimate trend for standby systems, industry-wide TDP FTS trend.

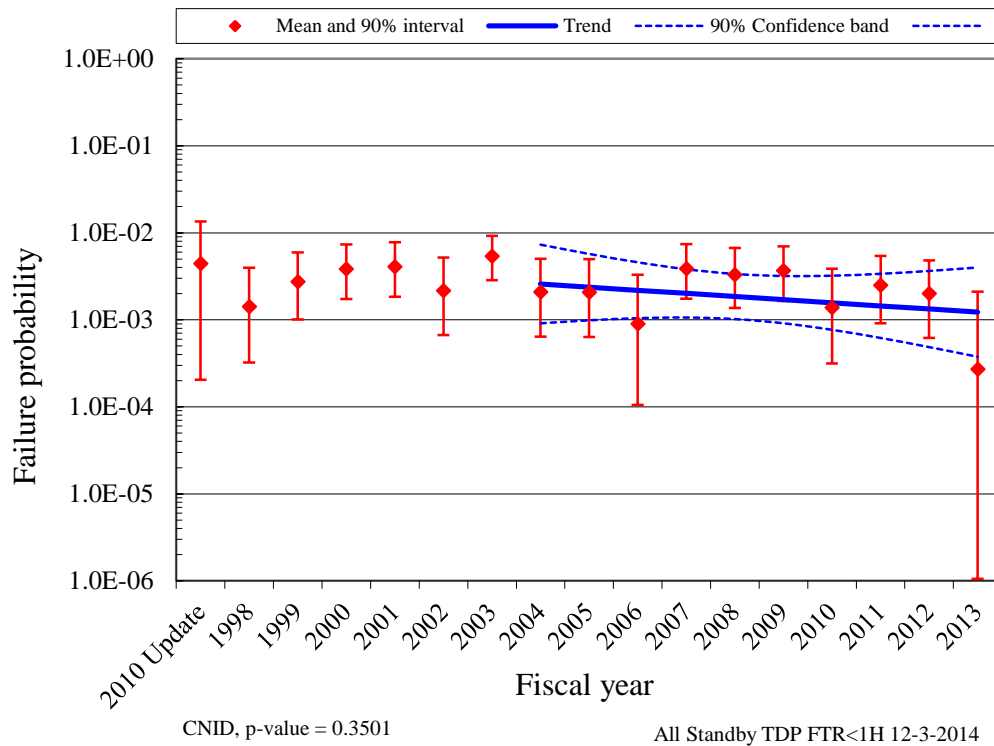


Figure 2. Failure probability estimate trend for standby systems, industry-wide TDP FTR≤1H trend.

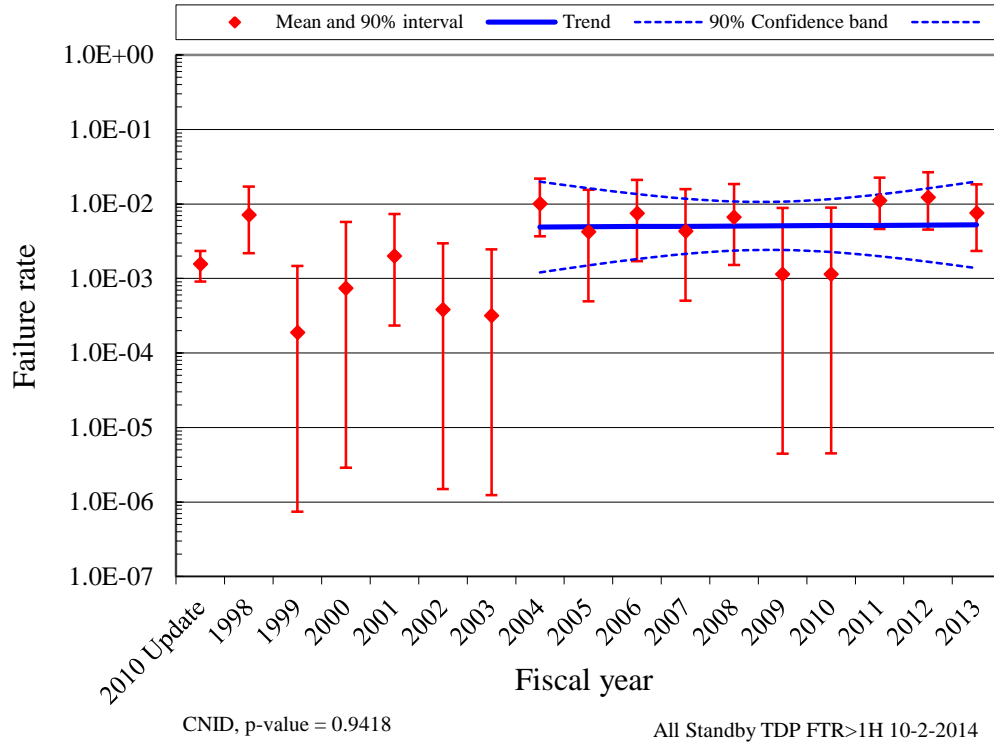


Figure 3. Failure rate estimate trend for standby systems, industry-wide TDP FTR > 1H trend.

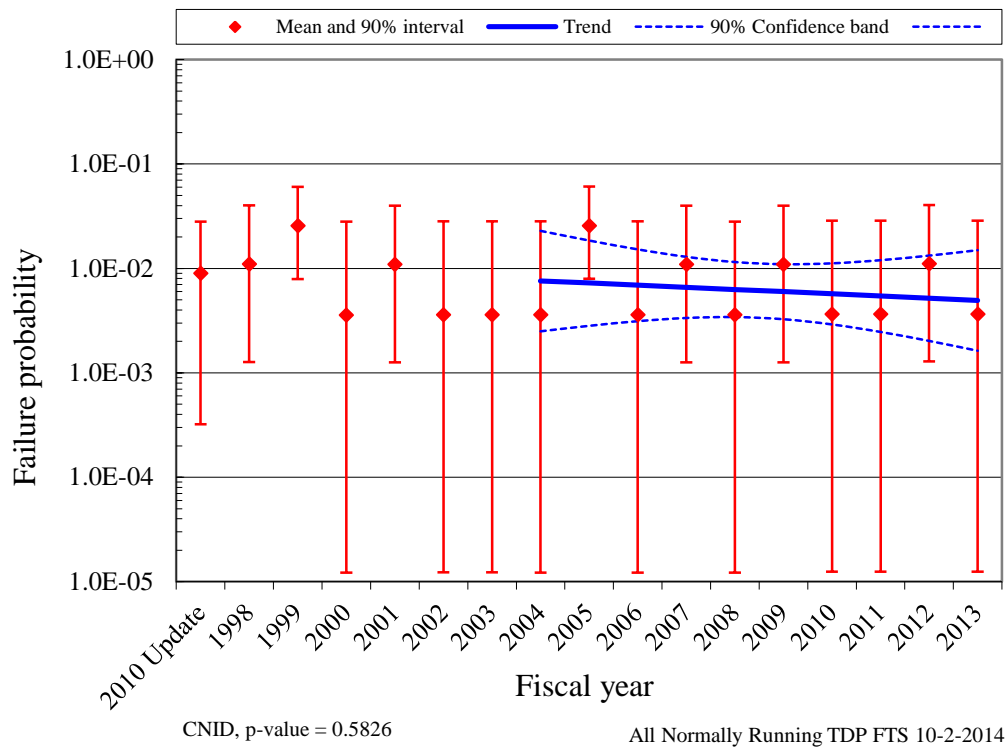


Figure 4. Failure probability estimate trend for normally running systems (MFW), industry-wide TDP FTS trend.

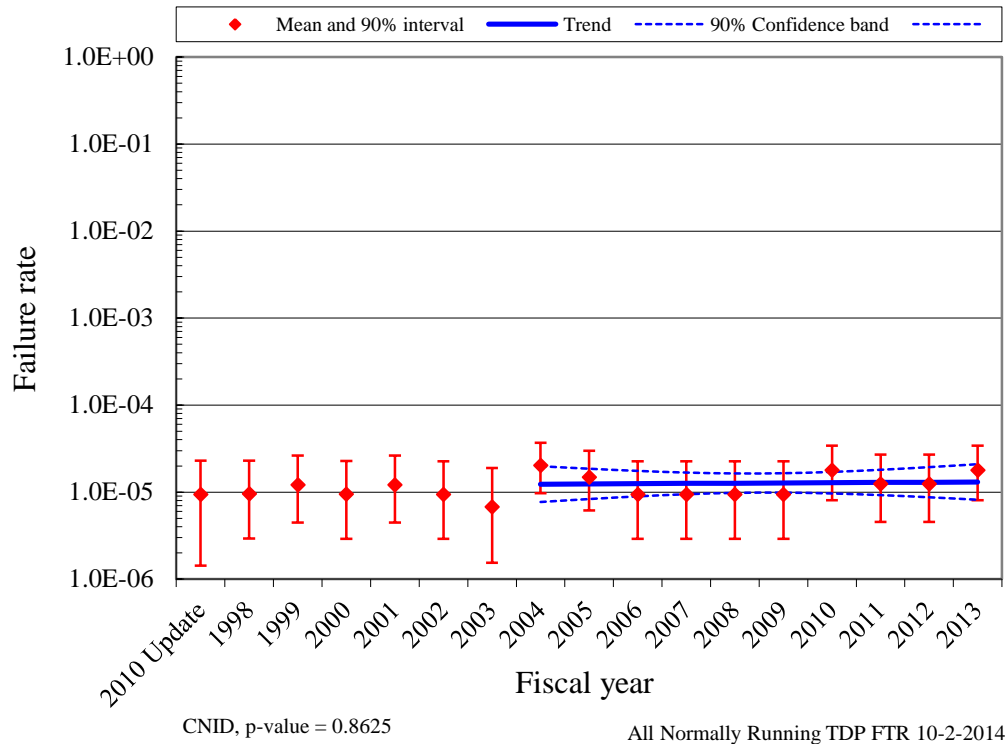


Figure 5. Failure rate estimate trend for normally running systems (MFW), industry-wide TDP FTR trend.

In the plots, the means of the posterior distributions from the Bayesian update process were trended across the years. The posterior distributions were also used for the vertical bounds for each year. The 5th and 95th percentiles of these distributions give an indication of the relative variation from year to year in the data. When there are no failures, the interval tends to be larger than the interval for years when there are one or more failures. The larger interval reflects the uncertainty that comes from having little information in that year’s data. Such uncertainty intervals are determined by the prior distribution. In each plot, a relatively “flat” constrained noninformative prior distribution (CNID) is used, which has large bounds.

The horizontal curves plotted around the regression lines in the graphs show 90 percent simultaneous confidence bands for the fitted lines. The simultaneous confidence band bounds are larger than ordinary confidence intervals for the trended values because they form a band that has a 90% probability of containing the entire line. In the lower left hand corner of the trend figures, the regression p-values are reported. They come from a statistical test on whether the slope of the regression line might be zero. Low p-values indicate that the slopes are not likely to be zero, and that trends exist.

Further information on the trending methods is provided in Section 2 of the [Overview and Reference document](#). A final feature of the trend graphs is that the baseline industry values from Table 2 are shown for comparison.

## 4. UNAVAILABILITY

### 4.1 Overview

The industry-wide test or maintenance UA of TDP trains has been calculated from the operating experience. UA data are for TDP trains, which can include more than just the TDP. However, in most cases the TDP contributes the majority of the UA reported. Table 3 shows overall results for the TDP from Reference 1 based on UA data from MSPI Basis Documents, covering 2002 to 2010. In the calculations, planned and unplanned unavailable hours for a train are combined.

*Table 3. Industry-wide distributions of unavailability for TDPs.*

Description	Mean	Distribution	$\alpha$	$\beta$
TDP test or maintenance (AFW)	5.33E-03	Beta	1.93	360.48
TDP test or maintenance (ALL)	7.76E-03	Beta	2.17	277.36
TDP test or maintenance (HPCI)	1.15E-02	Beta	11.88	1024.52
TDP test or maintenance (RCIC)	1.02E-02	Beta	5.65	550.06

### 4.2 TDP Unavailability Trends

For the 1998–2013 period, the following are overall maintenance unavailability data. Note that these data do not supersede the data in Table 3 for use in risk assessments.

The trend in standby TDP train unavailability is shown in Figure 6. The data for this figure is in Table 14. The TDPs in systems AFW, HPCI, and RCIC are pooled and trended (these are the systems with maintenance unavailability data currently analyzed). The trend chart shows the results of using data for each year's component unavailability data over time. The yearly (1998–2013) unavailability and reactor critical hour data were obtained from the Reactor Oversight Program (1998 to 2001) and ICES (2002 to 2013) data for the TDP component. The total downtimes during operation for each plant and year were summed, and divided by the corresponding number of TDP-reactor critical hours. Unavailability data for shutdown periods are not reported.

The mean and variance for each year is the sample mean and variance calculated from the plant-level unavailabilities for that year. The vertical bar spans the calculated 5th to 95th percentiles of the beta distribution with matching means.

For the trend graphs, a least squares fit is sought for the linear or logit model. Section 3 in the [Overview and Reference document](#) provides further information. In the lower left hand corner of the trend figures, the p-value is reported.

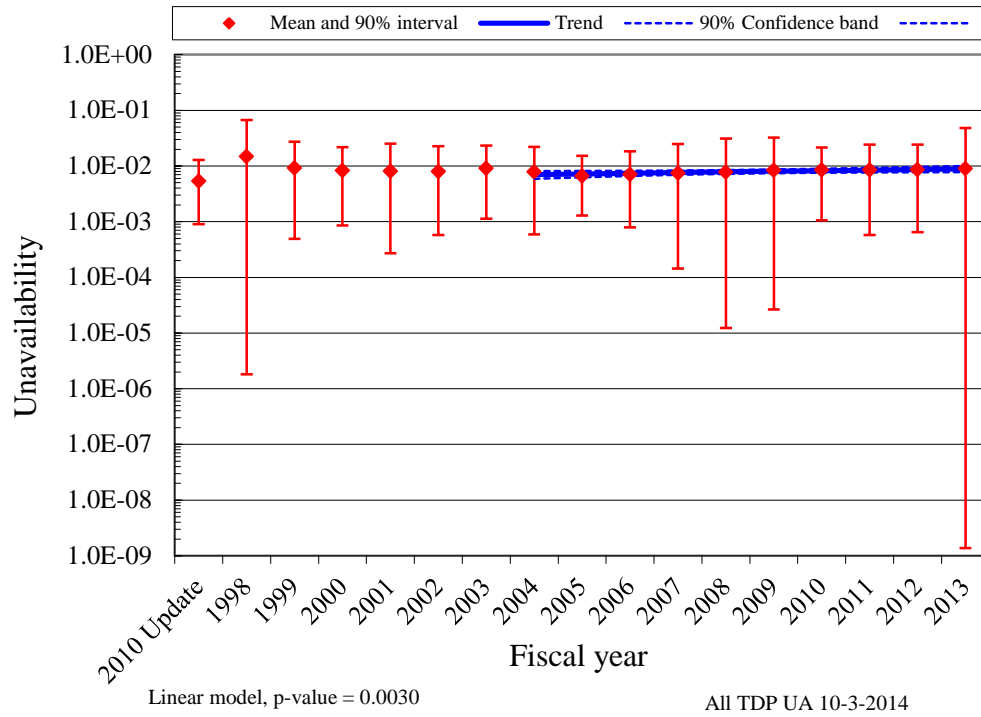


Figure 6. Pooled AFW, HPCI, and RCIC TDP UA trend.

## 5. TDP UNRELIABILITY TRENDS

Trends in total component unreliability are shown in Figure 7 and Figure 8. Plot data for these figures are in Table 15 and Table 16, respectively. Total unreliability is defined as the result of the union of the UA, FTS, FTR $\leq$ 1H, and FTR >1H (or FTR) failure probabilities. The FTR>1H is calculated for 7 hours and the FTR is calculated for 8 hours to provide the results for an 8-hour mission. Since the normally running systems TDP components do not have UA data or the FTR $\leq$ 1H data, there is no UA or FTR $\leq$ 1H for that calculation. The trending method is described in more detail in Section 4 of the Overview and Reference document. In the lower left hand corner of the trend figures, the regression method is reported.

The standby systems from Table 2 are trended together.

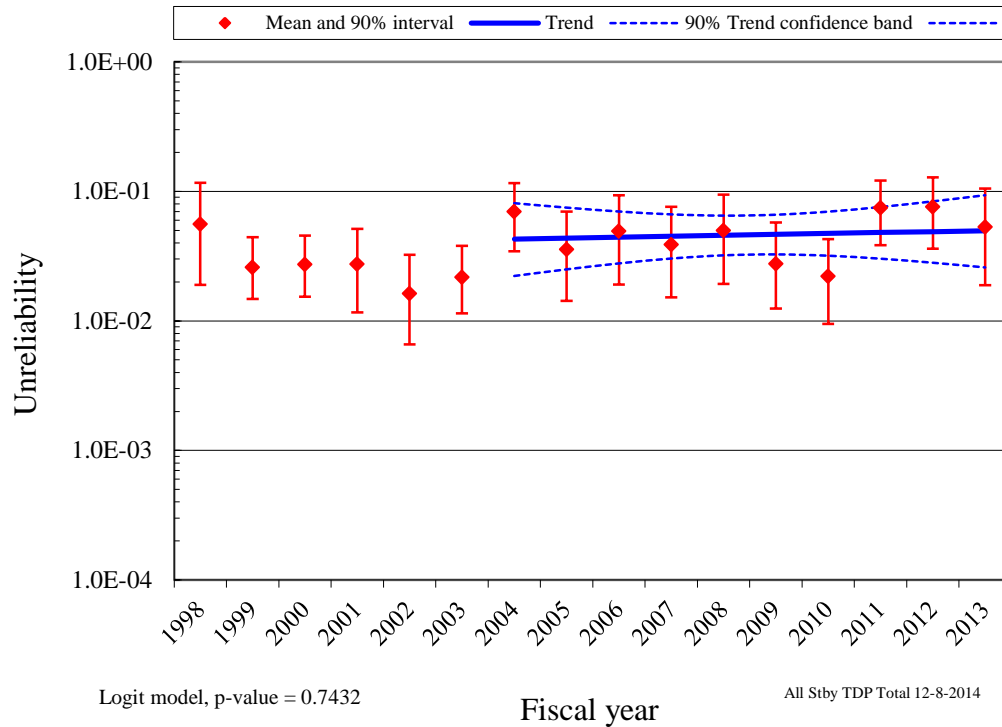


Figure 7. Standby systems, industry-wide TDP unreliability trend (8-hour mission).

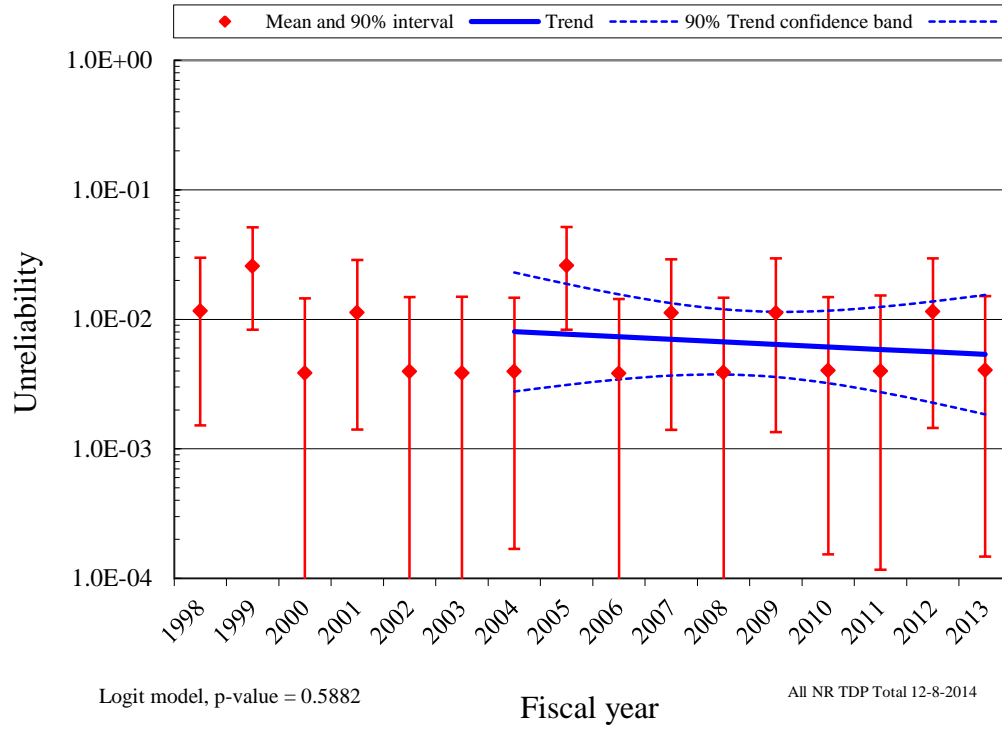


Figure 8. Normally running systems, industry-wide TDP unreliability trend (8-hour mission).



## 6. ENGINEERING TRENDS

This section presents frequency trends for TDP failures and demands. The data are normalized by reactor year for plants that have the equipment being trended. The rate methods described in Section 2 of the [Overview and Reference document](#) are used.

### 6.1 Standby TDP Engineering Trends

Figure 9 shows the trend for standby TDP start demands. Figure 10 shows the trend for TDP run  $\leq 1$  hour demands. Figure 11 shows the trend for the TDP run hours. Table 17, Table 18, and Table 19 provide the plot data, respectively.

Figure 12 shows the trend for TDP FTS events. Figure 13 shows the trend for TDP FTR $\leq 1$ H events, and Figure 14 shows the trend for the TDP FTR $>1$ H events. Table 20, Table 22, and Table 23 provide the plot data, respectively. The standby systems from Table 2 are trended together for each figure.

Table 4 summarizes the failures by system and year for the FTS failure mode. Table 5 summarizes the failures by system and year for the FTR $\leq 1$ H failure mode. Table 6 summarizes the failures by system and year for the FTR $>1$ H failure mode. Table 4, Table 5, and Table 6 only include systems where failures of that failure mode have been detected.

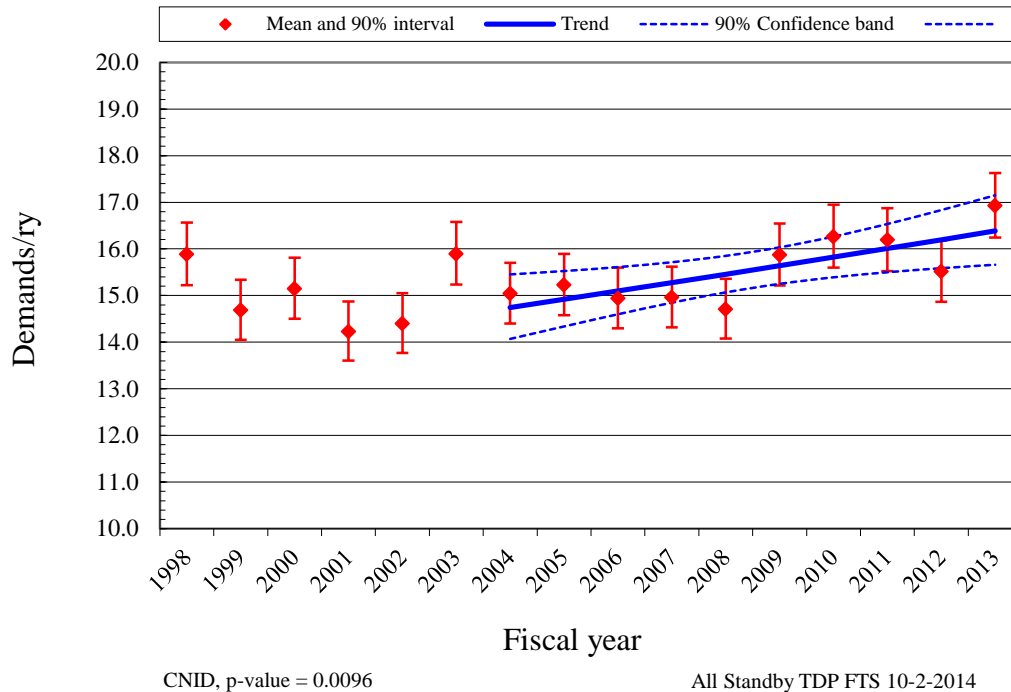


Figure 9. Frequency (events per reactor year) of start demands, standby TDPs.

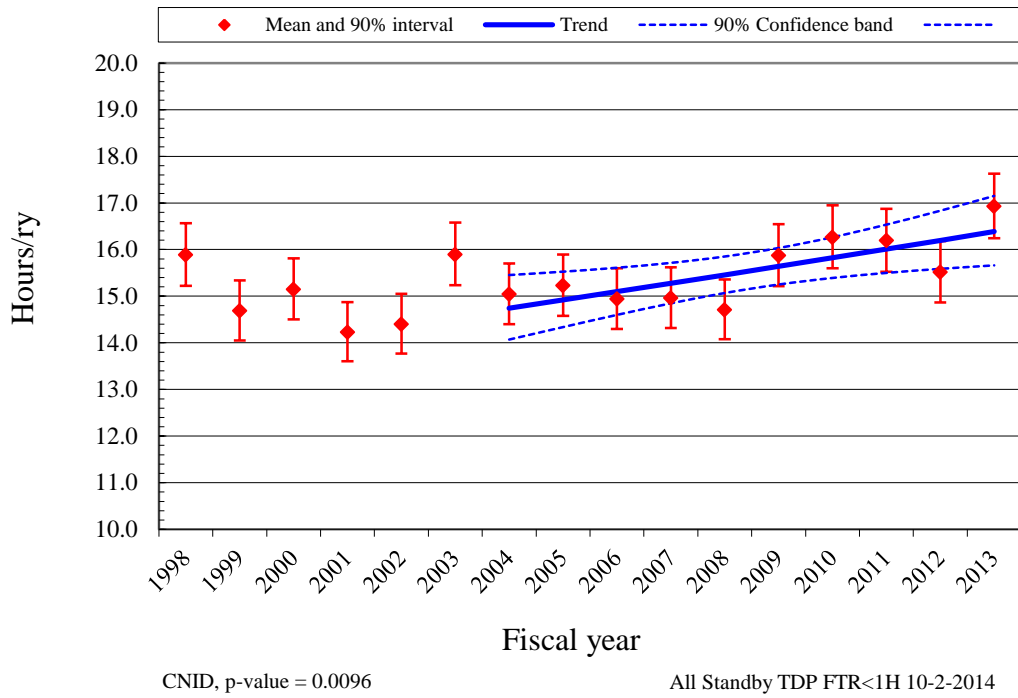


Figure 10. Standby TDP run hours per reactor critical year of run  $\leq 1H$  hours.

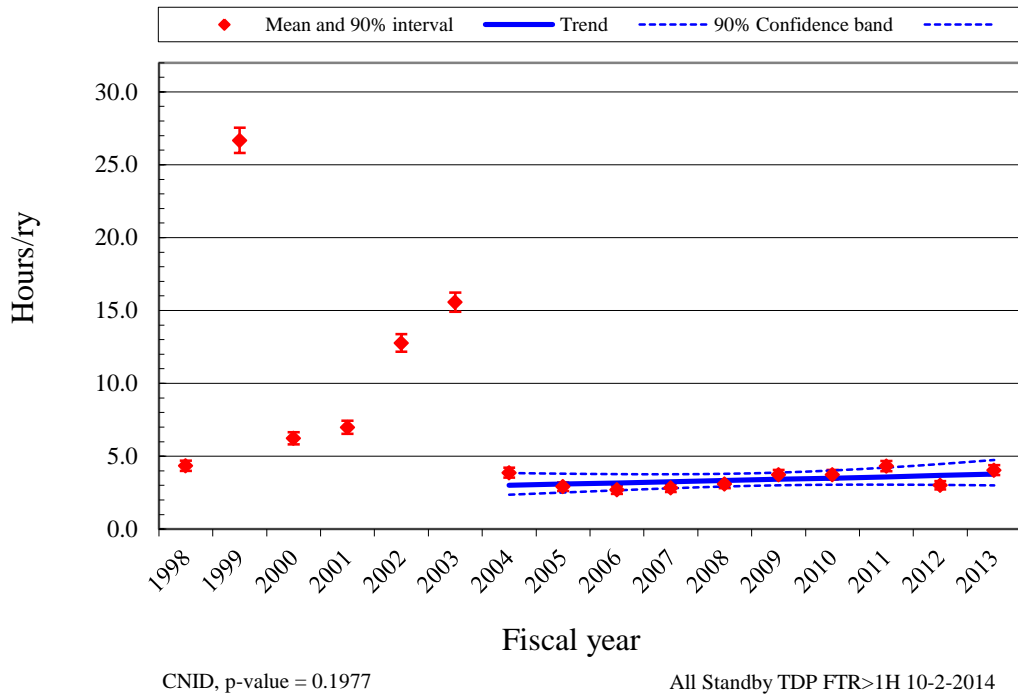
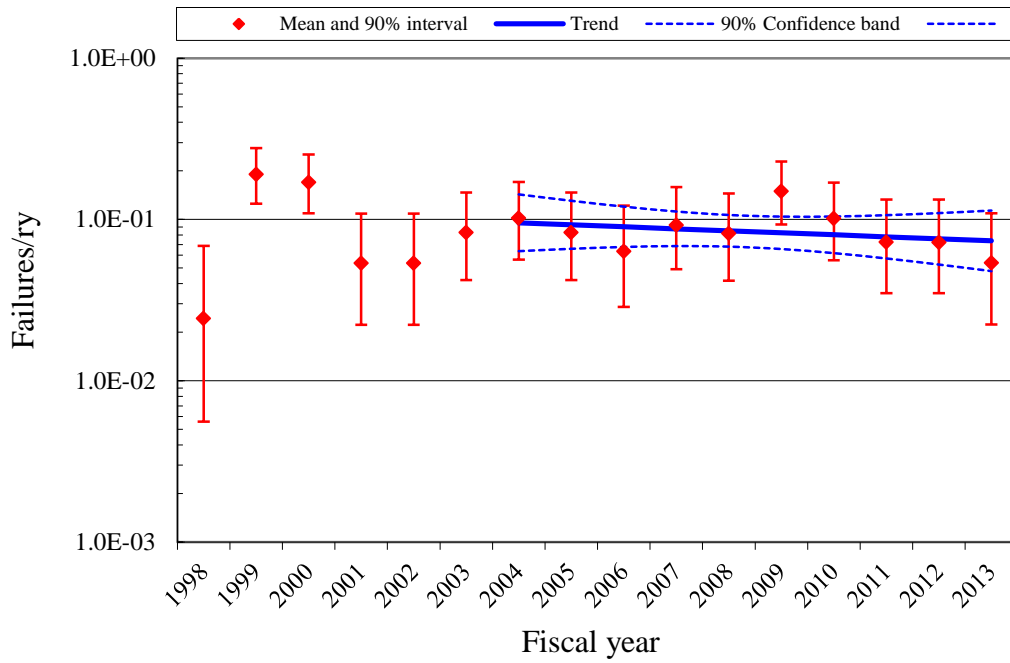


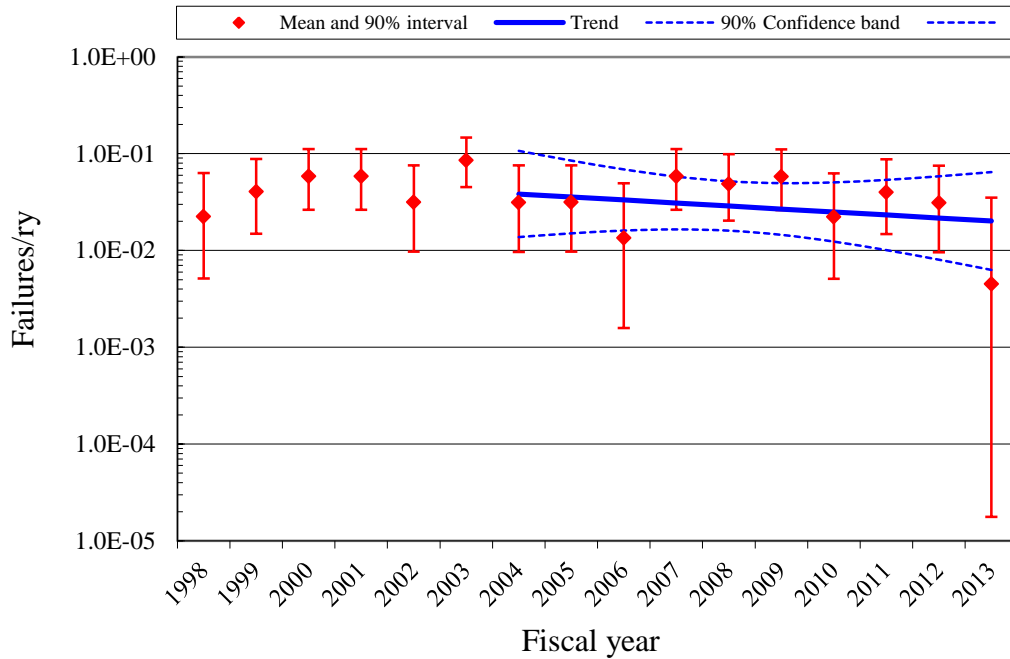
Figure 11. Standby TDP run hours per reactor critical year.



CNID, p-value = 0.3894

All Standby TDP FTS 10-2-2014

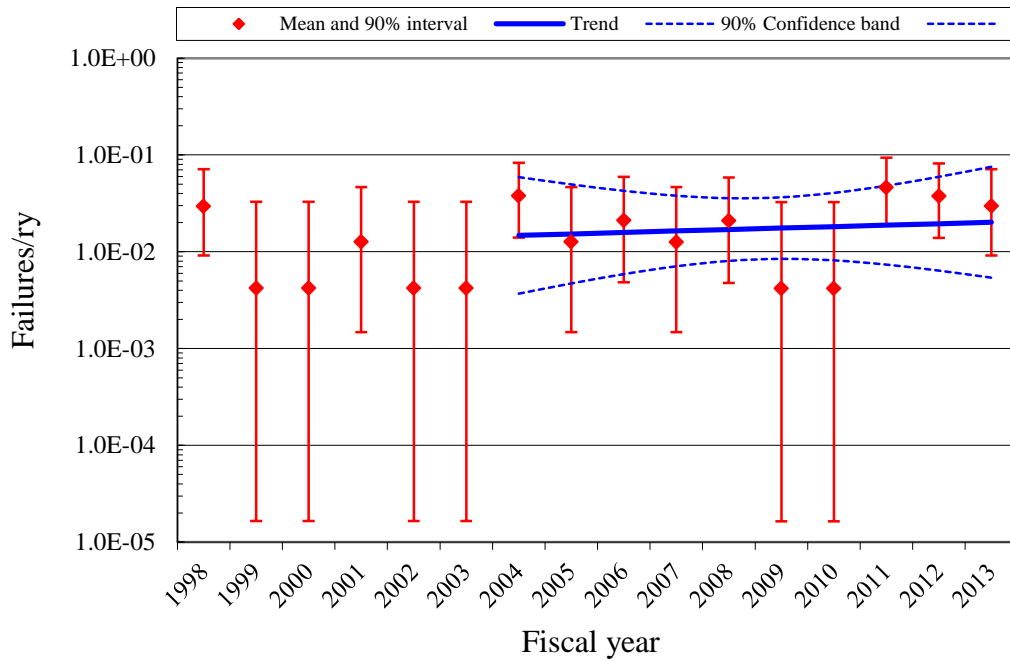
Figure 12. Frequency (events per reactor year) of FTS events, standby TDPs.



CNID, p-value = 0.4102

All Standby TDP FTR<1H 10-2-2014

Figure 13. Frequency (events per reactor year) of FTR $\leq$ 1H events, standby TDPs.



CNID, p-value = 0.7410

All Standby TDP FTR > 1H 10-2-2014

Figure 14. Frequency (events per reactor year) of FTR > 1H events, standby TDPs.

## 6.2 Normally Running TDP Engineering Trends

Figure 15 shows the trend for TDP start demands and Figure 16 shows the trend for the TDP run hours. Table 23 and Table 24 provide the plot data, respectively.

Figure 17 shows the trend for TDP FTS events and Figure 18 shows the trend for the TDP FTR events. Table 25 and Table 26 provide the plot data, respectively. The normally running system (MFW) from Table 2 is trended for each figure.

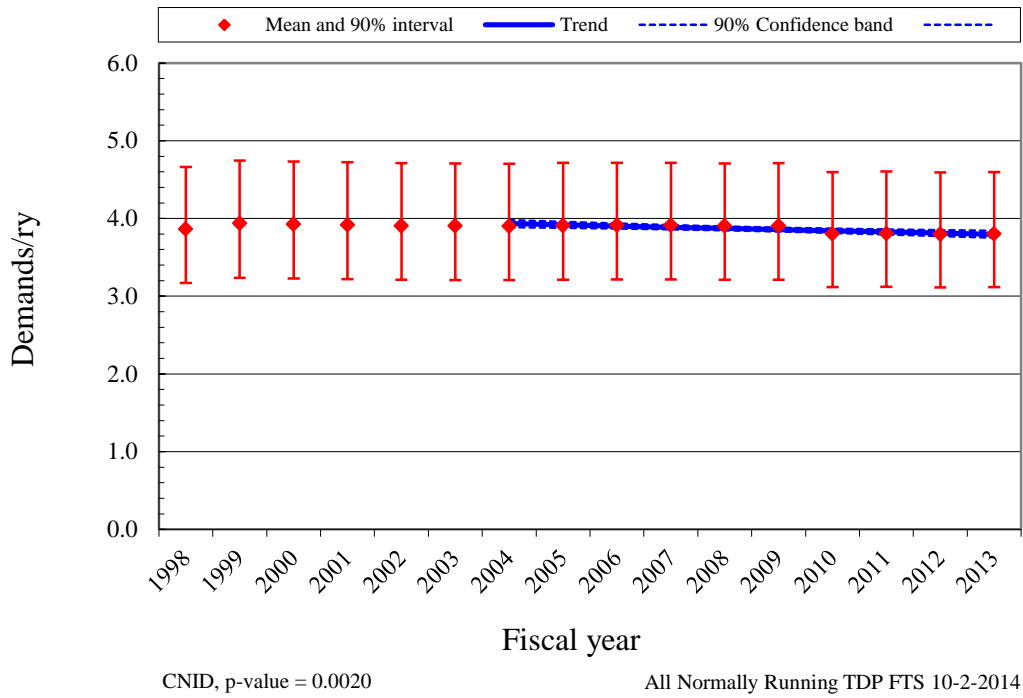


Figure 15. Frequency (events per reactor year) of start demands, normally running TDPs.

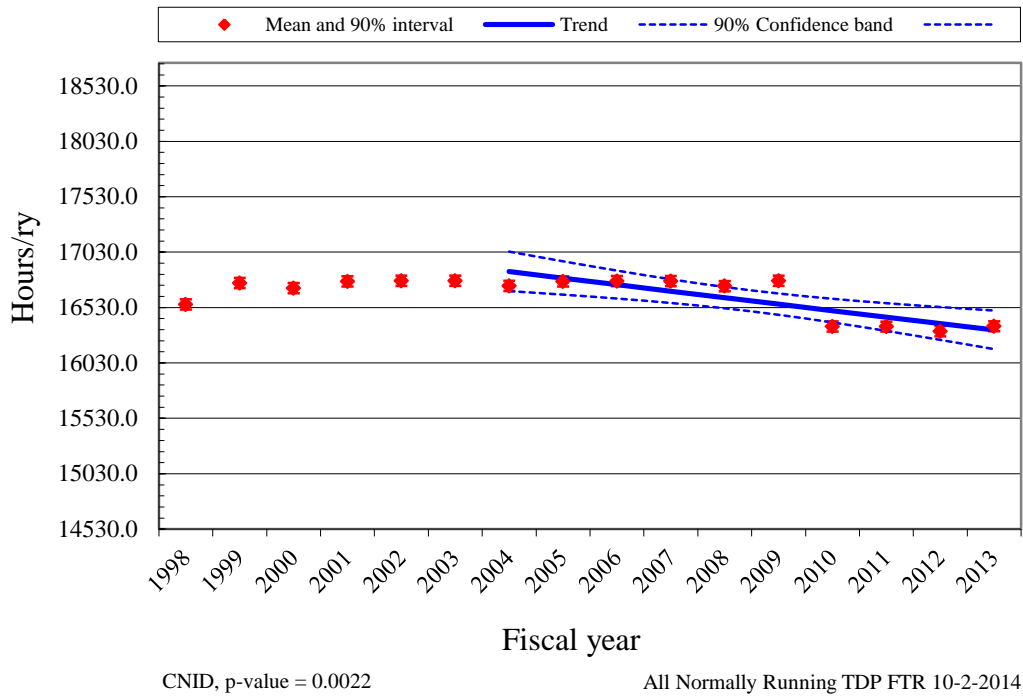
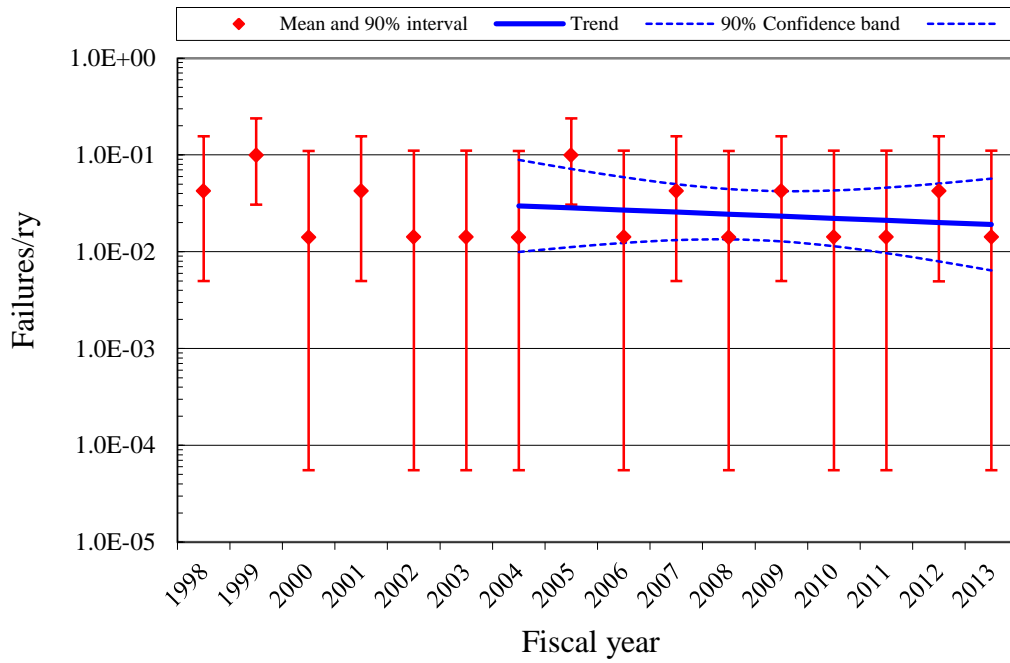


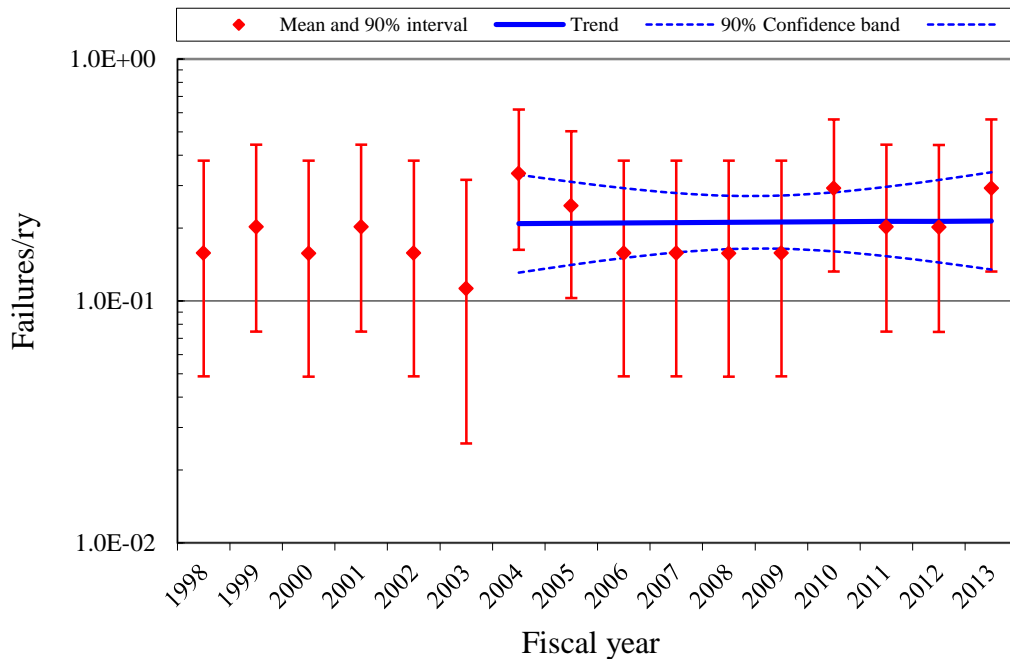
Figure 16. Normally running TDP run hours per reactor year.



CNID, p-value = 0.5657

All Normally Running TDP FTS 10-2-2014

Figure 17. Frequency (events per reactor year) of FTS events, normally running TDPs.



CNID, p-value = 0.9342

All Normally Running TDP FTR 10-2-2014

Figure 18. Frequency (events per reactor year) of FTR events, normally running TDPs.

Table 4. Summary of TDP failure counts for the FTS failure mode over time by system.

System Code	TDP Count	TDP Percent	Fiscal Year										Total	Percent of Failures
			04	05	06	07	08	09	10	11	12	13		
AFW	74	42.5%	4	4	3	4	3	10	4	4	2	1	38	43.7%
HCI	28	16.1%	1	2	1	3	1	3	3	2	3	3	19	21.8%
RCI	31	17.8%	5	2	2	2	4	2	3	1	3	1	24	27.6%
MFW	41	23.6%	0	3	0	1	0	1	0	0	1	0	6	6.9%
Total	174	100.0%	10	11	6	10	8	16	10	7	9	5	87	100.0%

Table 5. Summary of TDP failure counts for the  $FTR \leq IH$  failure mode over time by system.

System Code	TDP Count	TDP Percent	Fiscal Year										Total	Percent of Failures
			04	05	06	07	08	09	10	11	12	13		
AFW	74	55.6%	3	1	1	2	3	4	2	1	2	0	19	57.6%
HCI	28	21.1%	0	0	0	2	2	1	0	0	0	0	5	15.2%
RCI	31	23.3%	0	2	0	2	0	1	0	3	1	0	9	27.3%
Total	133	100.0%	3	3	1	6	5	6	2	4	3	0	33	100.0%

Table 6. Summary of TDP failure counts for the  $FTR > IH$  and FTR failure mode over time by system.

System Code	TDP Count	TDP Percent	Fiscal Year										Total	Percent of Failures
			04	05	06	07	08	09	10	11	12	13		
AFW	74	42.5%	3	1	2	0	1	0	0	2	3	1	12	21.1%
HCI	28	16.1%	1	0	0	0	1	0	0	3	0	1	5	8.8%
RCI	31	17.8%	0	0	0	1	0	0	0	0	1	1	2	3.5%
MFW	41	23.6%	7	5	3	3	3	3	6	4	4	6	38	66.7%
Total	174	100.0%	11	6	5	4	5	3	6	9	8	9	57	100.0%

### 6.3 Comparison of ICES TDP Unplanned Demand Results with Industry Results

An ongoing concern in the industry is whether a combination of test, non-test demand, and actual demand data adequately represents standby component performance during unplanned demands. This comparison evaluates the same dataset for standby components that is used for the overall trends shown in this document, but limits the failure data to those that are discovered during an ESF demand and the ESF demands reported in ICES. The data are further limited to FY-03 to present since the ESF demand reporting in ICES is inconsistent prior to FY-03.

The standby TDP ESF unplanned demand data covering FY-03 through FY-13 are summarized in Table 7. Consistency between the unplanned demand data and industry-average performance from Table 2 was evaluated using the predictive distribution approach outlined in the Handbook of Parameter Estimation for Probabilistic Risk Assessment, NUREG/CR-6823, Sections 6.2.3.5 and 6.3.3.4 [Reference 3]. Simulation is required.

The unplanned demand data were aggregated at the plant and system level (failures and demands). Assuming each plant and system can have a different failure probability, the industry-average distribution (from Table 2) was sampled for each plant and system. The predicted number of failure events for each plant and system was evaluated using the binomial distribution with the plant-specific failure probability and its associated number of demands. Then the total number of predicted failures was obtained by summing the individual plant results. This process was repeated 1000 times, each time obtaining a total number of predicted failures. The 1000 sample results were ordered from high to low. Then the actual number of unplanned demand failures observed (listed in Table 7) was compared with this ordered sample to determine the probability of observing this number of failures or greater. If the probability was greater than 0.05 and less than 0.95, then the unplanned demand performance was considered to be consistent with the industry-average distribution obtained from the ICES data analysis.

*Table 7. Standby TDP unplanned demand performance comparison with industry-average performance.*

Failure Modes	Plants	Demands or Hours	Failures	Expected Failures	Probability of $\geq$ Failures	Consistent with Industry-Average Performance? <sup>a</sup>
FTS	98	447	4	2.9	0.30	Yes
FTR $\leq$ 1H	98	252	7	1.1	0.01	No
FTR $>$ 1H	98	582	1	0.9	0.59	Yes

a. If the probability of observing the actual failures or greater is  $\geq 0.05$  and  $\leq 0.95$ , then the manufacturer performance is considered to be consistent with the industry-average performance.

The unplanned demand FTS and FTR $>$ 1H are consistent with the industry-average distribution. The unplanned demand failure mode observation FTR $\leq$ 1H is not consistent and lies in the lower 95% (degraded performance) meaning that the TDP performs worse than the industry average distribution.



## 6.4 TDP Engineering Analysis by Failure Modes

The engineering analysis of TDP failure sub-components, causes, detection methods, and recovery possibility are presented in this section. First, each analysis divides the events into two categories: standby and normally running TDPs. Note that the  $FTR \leq 1H$  failure mode only applies to standby TDPs and therefore only shows the Standby category data.

The second division of the events is by the failure mode determined after ICES data review by the staff. See Section 0 for more description of failure modes.

**TDP sub-component** contributions to the three failure modes are presented in Figure 19. The sub-component contributions are similar to those used in the CCF database. The driver (specifically the governor) has the highest percentage contributions to failures for all three failure modes.

**TDP cause** group contributions to the three failure modes are presented in Figure 20. The cause groups are similar to those used in the CCF database. Table 8 shows the breakdown of the cause groups with the specific causes that were coded during the data collection. The most likely causes are human errors, design issues, and internal faults. Internal means that the cause was related to something within the TDP component such as a worn out part or the normal internal environment. The human cause group is primarily influenced by maintenance and operating procedures and practices. The design cause group is influenced by manufacturing, installation, and design issues.

**TDP detection** methods to the three failure modes are presented in Figure 21. There are differences in the detection method based on the Standby and normally running categories.

**Standby**—the most likely detection method for all three failure modes is testing. Inspection is also important for the FTS failure mode. The incidence of inspection for the FTS failure mode indicates that the equipment was observed to be unable to start without a demand (e.g., an alarmed condition, leaking oil, state of another component, etc.).

**Normally running**—the most likely detection method for FTR is non-testing. The prevalent FTS detection is non-test demands.

**TDP recovery** to the three failure modes are presented in Figure 22. The overall non-recovery to recovery ratio is approximately 4:1.

Table 8. Component failure cause groups.

<b>Group</b>	<b>Specific Cause</b>	<b>Description</b>
Design	Construction/installation error or inadequacy	Used when a construction or installation error is made during the original or modification installation. This includes specification of incorrect component or material.
Design	Design error or inadequacy	Used when a design error is made.
Design	Manufacturing error or inadequacy	Used when a manufacturing error is made during component manufacture.
External	State of other component	Used when the cause of a failure is the result of a component state that is not associated with the component that failed. An example would be the diesel failed due to no fuel in the fuel storage tanks.
External	Ambient environmental stress	Used when the cause of a failure is the result of an environmental condition from the location of the component.
Human	Accidental action (unintentional or undesired human errors)	Used when a human error (during the performance of an activity) results in an unintentional or undesired action.
Human	Human action procedure	Used when the procedure is not followed or the procedure is incorrect. For example: when a missed step or incorrect step in a surveillance procedure results in a component failure.
Human	Inadequate maintenance	Used when a human error (during the performance of maintenance) results in an unintentional or undesired action.
Internal	Internal to component, piece-part	Used when the cause of a failure is a non-specific result of a failure internal to the component that failed other than aging or wear.
Internal	Internal environment	The internal environment led to the failure. Debris/Foreign material as well as an operating medium chemistry issue.
Internal	Setpoint drift	Used when the cause of a failure is the result of setpoint drift or adjustment.
Internal	Age/Wear	Used when the cause of the failure is a non-specific aging or wear issue.
Other	Unknown	Used when the cause of the failure is not known.
Other	Other (stated cause does not fit other categories)	Used when the cause of a failure is provided but it does not meet any one of the descriptions.
Procedure	Inadequate procedure	Used when the cause of a failure is the result of an inadequate procedure operating or maintenance.

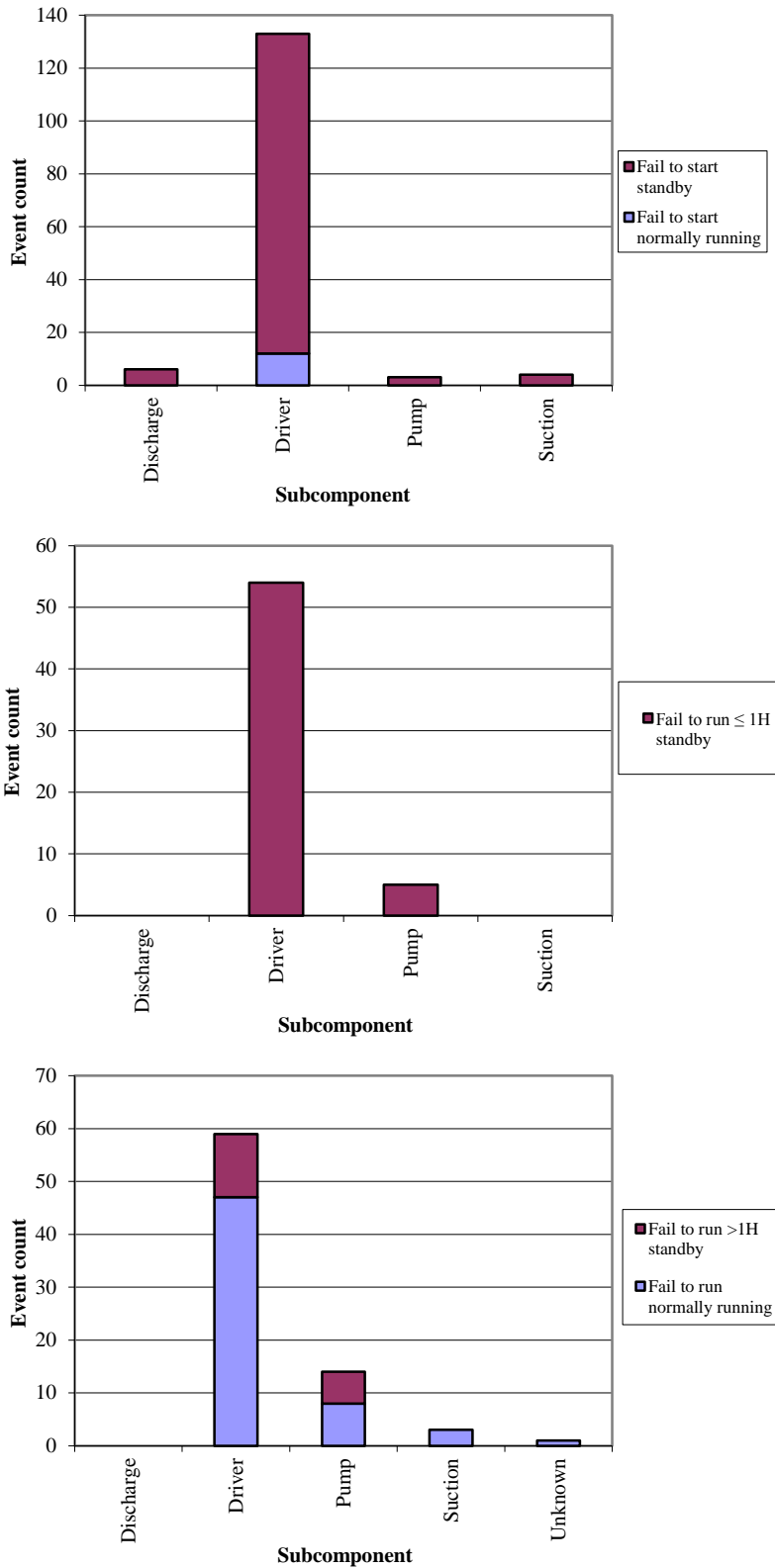


Figure 19. TDP failure event breakdown by subcomponent, failure mode, and operational status.

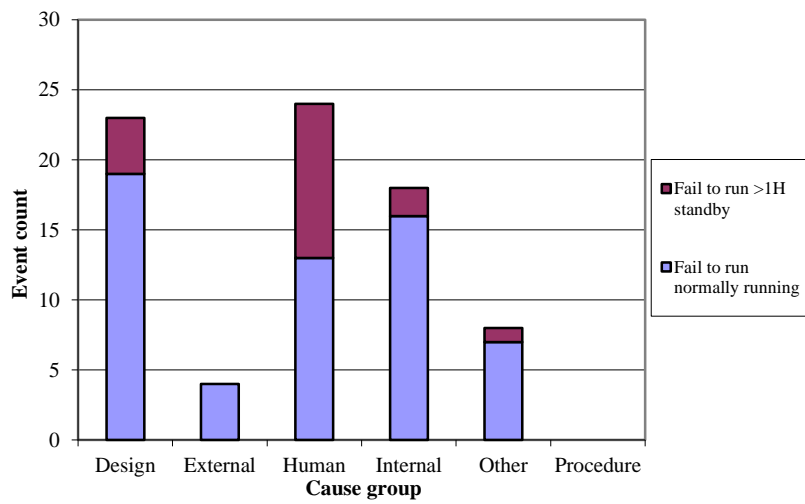
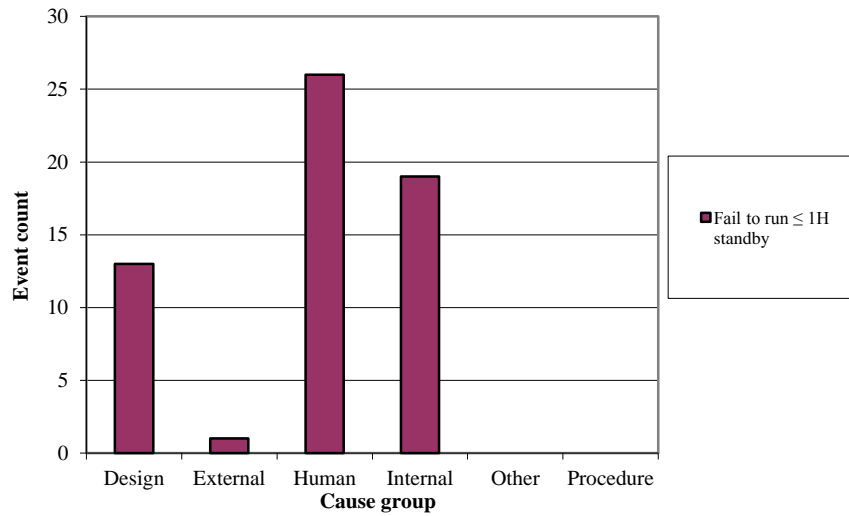
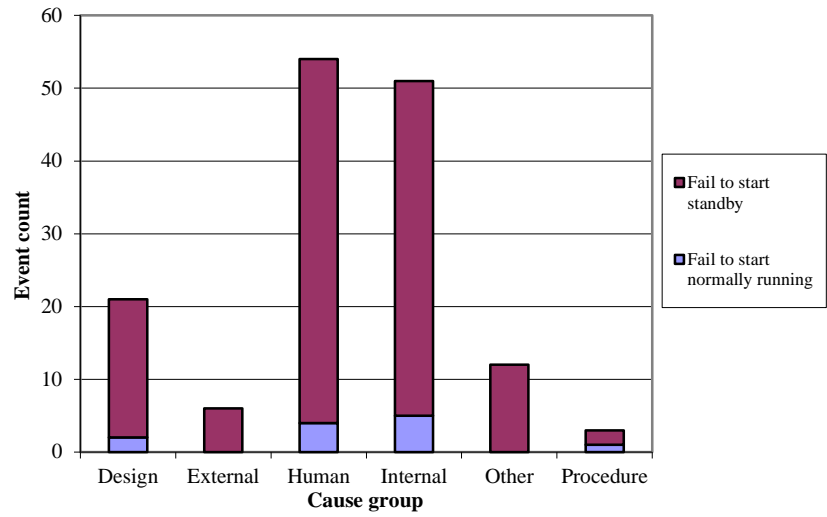


Figure 20. TDP failure event breakdown by cause group, failure mode, and operational status.

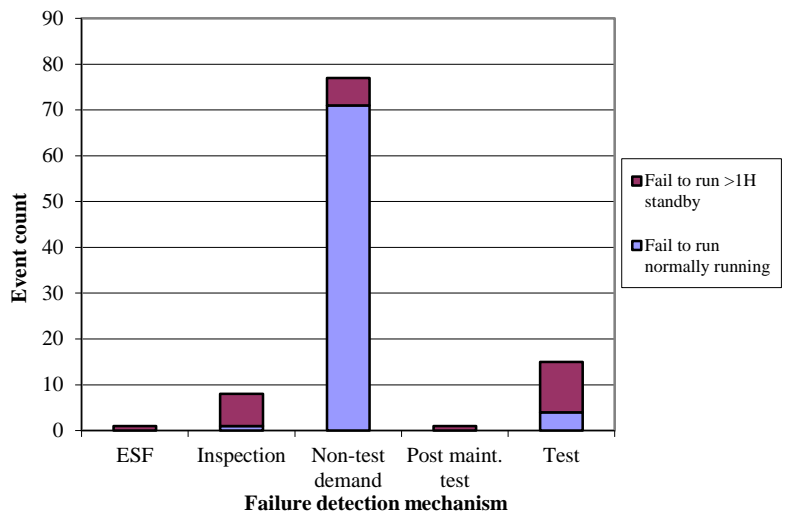
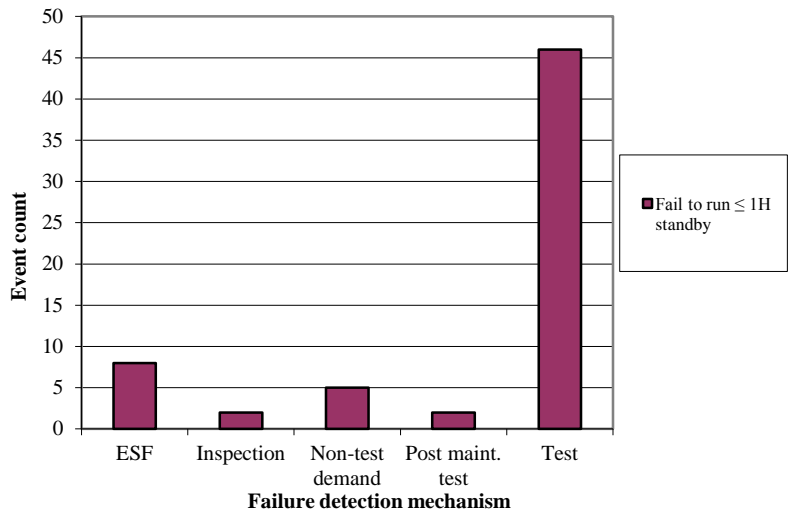
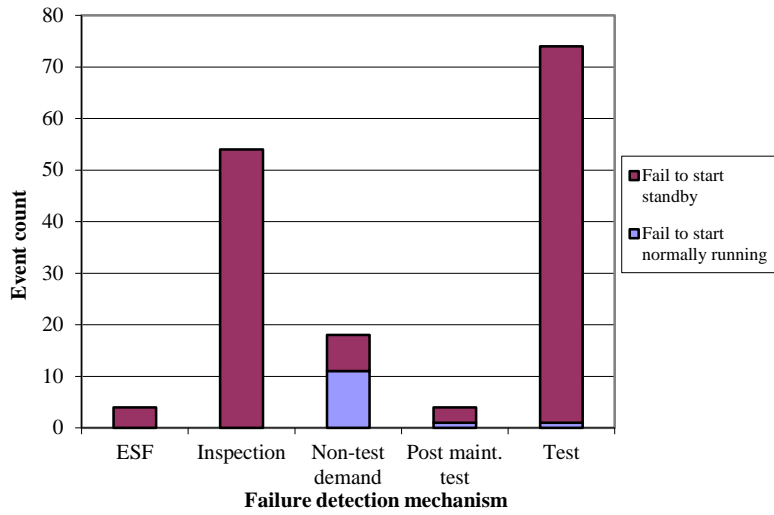


Figure 21. TDP failure event breakdown by failure detection method, failure mode, and operational status.

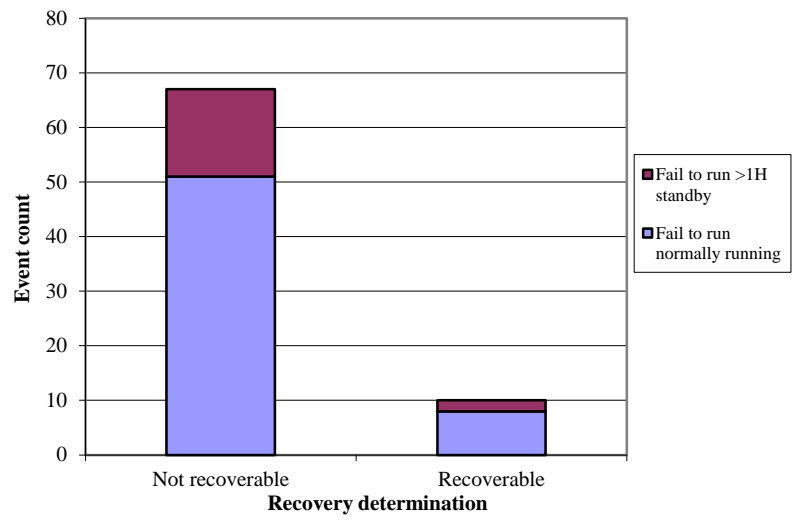
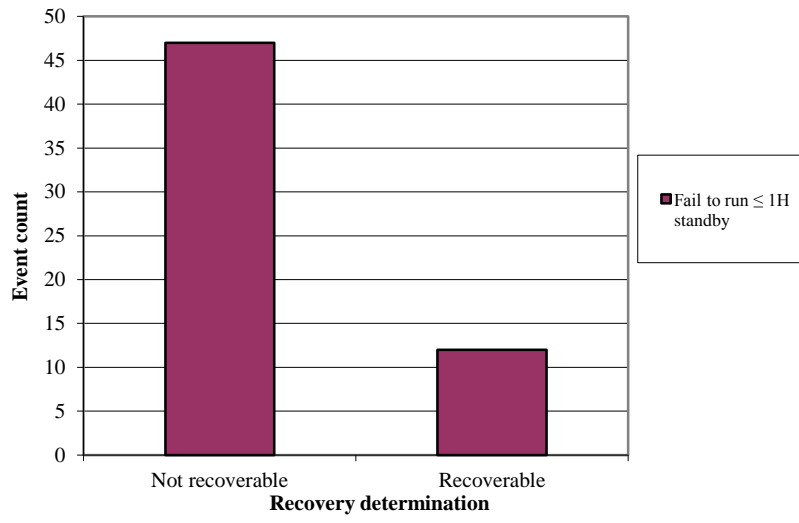
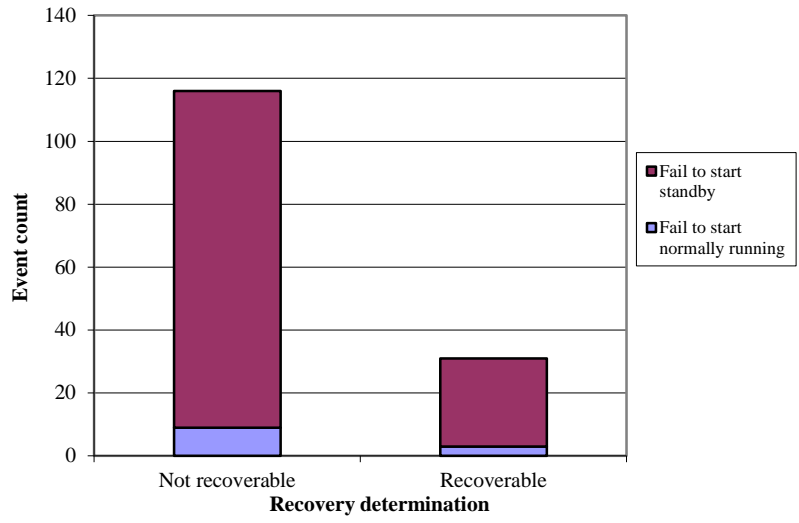


Figure 22. TDP failure event breakdown by recoverability determination, failure mode, and operational status.

## 7. TDP ASSEMBLY DESCRIPTION

The TDP is generally comprised of a pump, a turbine driver, and a governor. Most plant designs use a single stage “Terry Turbine”, whose piece-parts include a turbine trip and throttle valve, a mechanical overspeed trip mechanism, and a lubrication system. The various types of governors, used for turbine speed control are mostly manufactured by the Woodward Corporation. For the AFW system TDP, the governors are predominantly mechanical/hydraulic; pressure-compensated, and have a pneumatic remote speed-setting capability. For the RCIC and HPCI systems, the TDPs typically have a Woodward type EG-M electric/electronic governor and EG-R hydraulic actuators. Piece-parts of all governors include a turbine stop valve and a governor valve, while the EG-M usually includes a ramp generator/signal converter and other electrical controls.

The TDP failure modes include FTS,  $FTR \leq 1H$ , and  $FTR > 1H$ . These failure modes were used in NUREG/CR-6928 and are similar to those used in the MSPI Program.

Guidelines for determining whether a component event reported in ICES is to be included in FTS,  $FTR \leq 1H$ , or  $FTR > 1H$  are similar to those used in the MSPI Program. In general, any circumstance in which the component is not able to meet the performance requirements defined in the probabilistic risk assessment (PRA) is counted. This includes conditions revealed through testing, operational demands, unplanned demands, or discovery. Also, run failures that occur beyond the typical 24-hour mission time in PRAs are included. However, certain events are excluded: slow starting times that do not exceed the PRA success criteria, conditions that are annunciated immediately in the control room without a demand, and run events that are shown to not have caused an actual run failure within 24 hours. Also, events occurring during maintenance or post-maintenance testing that are related to the actual maintenance activities are excluded. All of the TDP events within ICES were reviewed to ensure that they were binned to the correct failure mode—FTS,  $FTR \leq 1H$ ,  $FTR > 1H$ , or no failure. However, even given detailed descriptions of failure events, this binning still required some judgment and involves some uncertainty.

Guidelines for counting demands and run hours are similar to those in the MSPI Program. Start and run demands include those resulting from tests, operational demands, and unplanned demands. Demands during maintenance and post-maintenance testing are excluded. Similarly, run hours include those from tests, operational demands, and unplanned demands.





## 8. DATA TABLES

*Table 9. Plot data for Figure 1, standby TDP FTS industry trend.*

FY	Failures	Demands	Regression Curve Data Points			Plot Trend Error Bar Points		
			Mean	Lower (5%)	Upper (95%)	Lower (5%)	Upper (95%)	Mean
2010 Update						2.86E-04	1.99E-02	6.49E-03
1998	2	1,540.5				3.50E-04	4.31E-03	1.53E-03
1999	19	1,424.1				8.51E-03	1.88E-02	1.29E-02
2000	17	1,473.2				7.21E-03	1.67E-02	1.12E-02
2001	5	1,379.9				1.56E-03	7.60E-03	3.74E-03
2002	5	1,396.6				1.54E-03	7.51E-03	3.70E-03
2003	8	1,541.7				2.66E-03	9.23E-03	5.21E-03
2004	10	1,462.6	6.44E-03	4.32E-03	9.61E-03	3.74E-03	1.13E-02	6.77E-03
2005	8	1,476.9	6.20E-03	4.41E-03	8.69E-03	2.77E-03	9.61E-03	5.43E-03
2006	6	1,448.8	5.96E-03	4.48E-03	7.92E-03	1.92E-03	8.11E-03	4.23E-03
2007	9	1,456.2	5.73E-03	4.48E-03	7.31E-03	3.28E-03	1.06E-02	6.15E-03
2008	8	1,445.2	5.51E-03	4.40E-03	6.89E-03	2.83E-03	9.81E-03	5.54E-03
2009	15	1,555.2	5.29E-03	4.20E-03	6.67E-03	5.87E-03	1.44E-02	9.43E-03
2010	10	1,593.5	5.09E-03	3.92E-03	6.61E-03	3.45E-03	1.04E-02	6.24E-03
2011	7	1,586.5	4.89E-03	3.59E-03	6.66E-03	2.17E-03	8.22E-03	4.48E-03
2012	7	1,524.4	4.70E-03	3.26E-03	6.79E-03	2.25E-03	8.54E-03	4.65E-03
2013	5	1,634.3	4.52E-03	2.93E-03	6.96E-03	1.33E-03	6.48E-03	3.19E-03
<b>Total</b>	<b>141</b>	<b>23,939.6</b>						

Table 10. Plot data for Figure 2, standby TDP FTR $\leq$ IH industry trend.

FY	Failures	Demands	Regression Curve Data Points			Plot Trend Error Bar Points		
			Mean	Lower (5%)	Upper (95%)	Lower (5%)	Upper (95%)	Mean
2010 Update						2.06E-04	1.34E-02	4.43E-03
1998	2	1,540.5				3.24E-04	3.98E-03	1.41E-03
1999	4	1,424.1				1.01E-03	5.96E-03	2.73E-03
2000	6	1,473.2				1.73E-03	7.35E-03	3.82E-03
2001	6	1,379.9				1.83E-03	7.78E-03	4.05E-03
2002	3	1,396.6				6.68E-04	5.21E-03	2.16E-03
2003	9	1,541.7				2.86E-03	9.24E-03	5.37E-03
2004	3	1,462.6	2.58E-03	9.11E-04	7.31E-03	6.42E-04	5.01E-03	2.07E-03
2005	3	1,476.9	2.38E-03	9.87E-04	5.72E-03	6.36E-04	4.97E-03	2.05E-03
2006	1	1,448.8	2.19E-03	1.04E-03	4.58E-03	1.05E-04	3.30E-03	8.95E-04
2007	6	1,456.2	2.01E-03	1.06E-03	3.81E-03	1.75E-03	7.43E-03	3.86E-03
2008	5	1,445.2	1.85E-03	1.02E-03	3.37E-03	1.37E-03	6.69E-03	3.29E-03
2009	6	1,555.2	1.71E-03	9.13E-04	3.19E-03	1.65E-03	7.01E-03	3.65E-03
2010	2	1,593.5	1.57E-03	7.68E-04	3.21E-03	3.15E-04	3.86E-03	1.37E-03
2011	4	1,586.5	1.45E-03	6.19E-04	3.38E-03	9.17E-04	5.43E-03	2.48E-03
2012	3	1,524.4	1.33E-03	4.86E-04	3.65E-03	6.19E-04	4.83E-03	2.00E-03
2013	0	1,634.3	1.23E-03	3.76E-04	3.99E-03	1.06E-06	2.10E-03	2.69E-04
Total	63	23,939.6						

Table 11. Plot data for Figure 3, standby TDP FTR>1H industry trend.

FY	Failures	Hours	Regression Curve Data Points			Plot Trend Error Bar Points		
			Mean	Lower (5%)	Upper (95%)	Lower (5%)	Upper (95%)	Mean
2010 Update						9.12E-04	2.35E-03	1.56E-03
1998	3	421.2				2.19E-03	1.71E-02	7.07E-03
1999	0	2,589.1				7.38E-07	1.47E-03	1.88E-04
2000	0	605.5				2.89E-06	5.75E-03	7.36E-04
2001	1	676.6				2.34E-04	7.37E-03	2.00E-03
2002	0	1,238.9				1.50E-06	2.98E-03	3.81E-04
2003	0	1,510.7				1.24E-06	2.47E-03	3.16E-04
2004	4	375.6	4.90E-03	1.21E-03	1.99E-02	3.70E-03	2.19E-02	1.00E-02
2005	1	281.1	4.94E-03	1.50E-03	1.63E-02	4.95E-04	1.56E-02	4.22E-03
2006	2	260.4	4.98E-03	1.82E-03	1.36E-02	1.71E-03	2.10E-02	7.47E-03
2007	1	274.9	5.02E-03	2.14E-03	1.18E-02	5.04E-04	1.59E-02	4.30E-03
2008	2	304.1	5.05E-03	2.37E-03	1.08E-02	1.51E-03	1.86E-02	6.61E-03
2009	0	365.6	5.09E-03	2.41E-03	1.07E-02	4.47E-06	8.89E-03	1.14E-03
2010	0	365.2	5.13E-03	2.26E-03	1.16E-02	4.48E-06	8.90E-03	1.14E-03
2011	5	422.8	5.17E-03	1.99E-03	1.35E-02	4.60E-03	2.25E-02	1.11E-02
2012	4	294.1	5.21E-03	1.68E-03	1.62E-02	4.52E-03	2.67E-02	1.22E-02
2013	3	389.1	5.25E-03	1.38E-03	2.00E-02	2.34E-03	1.83E-02	7.56E-03
Total	26	10,374.9						

Table 12. Plot data for Figure 4, normally running TDP FTS industry trend.

FY	Failures	Demands	Regression Curve Data Points			Plot Trend Error Bar Points		
			Mean	Lower (5%)	Upper (95%)	Lower (5%)	Upper (95%)	Mean
2010 Update						3.22E-04	2.80E-02	8.93E-03
1998	1	77.2				1.27E-03	4.02E-02	1.10E-02
1999	3	78.7				7.91E-03	6.06E-02	2.55E-02
2000	0	78.7				1.22E-05	2.81E-02	3.56E-03
2001	1	78.3				1.26E-03	3.98E-02	1.09E-02
2002	0	78.1				1.23E-05	2.82E-02	3.58E-03
2003	0	78.1				1.23E-05	2.82E-02	3.58E-03
2004	0	78.2	7.60E-03	2.50E-03	2.29E-02	1.22E-05	2.82E-02	3.58E-03
2005	3	78.2	7.25E-03	2.82E-03	1.85E-02	7.94E-03	6.08E-02	2.56E-02
2006	0	78.2	6.91E-03	3.12E-03	1.52E-02	1.22E-05	2.82E-02	3.58E-03
2007	1	78.2	6.59E-03	3.35E-03	1.29E-02	1.26E-03	3.99E-02	1.09E-02
2008	0	78.3	6.28E-03	3.42E-03	1.15E-02	1.22E-05	2.81E-02	3.57E-03
2009	1	78.1	5.99E-03	3.26E-03	1.10E-02	1.26E-03	3.99E-02	1.09E-02
2010	0	76.0	5.71E-03	2.91E-03	1.12E-02	1.24E-05	2.86E-02	3.63E-03
2011	0	76.1	5.44E-03	2.46E-03	1.20E-02	1.24E-05	2.86E-02	3.63E-03
2012	1	76.1	5.19E-03	2.02E-03	1.33E-02	1.28E-03	4.05E-02	1.11E-02
2013	0	76.0	4.95E-03	1.63E-03	1.49E-02	1.24E-05	2.86E-02	3.63E-03
Total	11	1,242.8						

Table 13. Plot data for Figure 5, normally running TDP FTR industry trend.

FY	Failures	Hours	Regression Curve Data Points			Plot Trend Error Bar Points		
			Mean	Lower (5%)	Upper (95%)	Lower (5%)	Upper (95%)	Mean
2010 Update						1.43E-06	2.29E-05	9.34E-06
1998	3	331,156.6				2.94E-06	2.30E-05	9.50E-06
1999	4	335,021.6				4.47E-06	2.64E-05	1.21E-05
2000	3	335,021.6				2.91E-06	2.27E-05	9.40E-06
2001	4	335,295.4				4.46E-06	2.64E-05	1.21E-05
2002	3	335,432.3				2.91E-06	2.27E-05	9.39E-06
2003	2	335,432.3				1.54E-06	1.89E-05	6.71E-06
2004	7	335,417.1	1.24E-05	7.70E-06	1.98E-05	9.74E-06	3.70E-05	2.01E-05
2005	5	335,310.6	1.24E-05	8.33E-06	1.86E-05	6.14E-06	3.00E-05	1.48E-05
2006	3	335,356.3	1.25E-05	8.94E-06	1.75E-05	2.91E-06	2.27E-05	9.39E-06
2007	3	335,371.5	1.26E-05	9.46E-06	1.68E-05	2.91E-06	2.27E-05	9.39E-06
2008	3	335,371.5	1.27E-05	9.80E-06	1.64E-05	2.91E-06	2.27E-05	9.39E-06
2009	3	335,386.7	1.28E-05	9.87E-06	1.65E-05	2.91E-06	2.27E-05	9.39E-06
2010	6	327,165.5	1.28E-05	9.65E-06	1.71E-05	8.08E-06	3.43E-05	1.78E-05
2011	4	327,135.1	1.29E-05	9.24E-06	1.81E-05	4.56E-06	2.70E-05	1.23E-05
2012	4	327,195.9	1.30E-05	8.73E-06	1.94E-05	4.56E-06	2.70E-05	1.23E-05
2013	6	327,195.9	1.31E-05	8.18E-06	2.09E-05	8.08E-06	3.43E-05	1.78E-05
Total	63	5,328,266.0						

Table 14. Plot data for Figure 6, all standby TDP unavailability trend.

FY	UA Hours	Critical Hours	Regression Curve Data Points			Plot Trend Error Bar Points		
			Mean	Lower (5%)	Upper (95%)	Lower (5%)	Upper (95%)	Mean
2010 Update						9.04E-04	1.28E-02	5.33E-03
1998	8,365.8	641,458.4				1.83E-06	6.69E-02	1.47E-02
1999	8,254.0	922,022.2				4.93E-04	2.73E-02	9.21E-03
2000	7,839.5	954,887.4				8.59E-04	2.18E-02	8.21E-03
2001	7,559.6	959,741.4				2.72E-04	2.53E-02	8.02E-03
2002	7,612.4	961,200.2				5.77E-04	2.26E-02	7.98E-03
2003	8,558.7	942,160.3				1.13E-03	2.34E-02	9.11E-03
2004	7,526.6	970,565.5	7.00E-03	5.89E-03	8.10E-03	5.94E-04	2.22E-02	7.87E-03
2005	6,183.9	956,879.4	7.21E-03	6.27E-03	8.14E-03	1.28E-03	1.53E-02	6.60E-03
2006	6,816.9	973,031.3	7.42E-03	6.63E-03	8.21E-03	7.87E-04	1.84E-02	7.00E-03
2007	7,123.7	969,478.2	7.63E-03	6.96E-03	8.30E-03	1.44E-04	2.50E-02	7.44E-03
2008	7,488.7	971,346.7	7.84E-03	7.23E-03	8.44E-03	1.23E-05	3.13E-02	7.72E-03
2009	7,853.9	967,221.8	8.05E-03	7.44E-03	8.65E-03	2.64E-05	3.23E-02	8.32E-03
2010	7,956.5	953,467.4	8.25E-03	7.58E-03	8.93E-03	1.06E-03	2.16E-02	8.44E-03
2011	7,836.9	943,250.0	8.46E-03	7.68E-03	9.25E-03	5.78E-04	2.42E-02	8.46E-03
2012	8,081.0	933,924.6	8.67E-03	7.74E-03	9.61E-03	6.46E-04	2.41E-02	8.56E-03
2013	8,056.6	915,795.3	8.88E-03	7.78E-03	9.99E-03	1.38E-09	4.80E-02	8.98E-03
Total	123,114.7	14,936,430.1						

Table 15. Plot data for Figure 7, standby TDP unreliability trend.

FY	Regression Curve Data Points			Plot Trend Error Bar Points		
	Mean	Lower (5%)	Upper (95%)	Lower (5%)	Upper (95%)	Mean
1998				1.89E-02	1.14E-01	5.52E-02
1999				1.45E-02	4.43E-02	2.58E-02
2000				1.55E-02	4.55E-02	2.73E-02
2001				1.17E-02	5.20E-02	2.75E-02
2002				6.57E-03	3.21E-02	1.62E-02
2003				1.15E-02	3.67E-02	2.16E-02
2004	4.29E-02	1.51E-02	1.16E-01	3.45E-02	1.16E-01	6.94E-02
2005	4.37E-02	1.81E-02	1.02E-01	1.44E-02	6.99E-02	3.55E-02
2006	4.44E-02	2.12E-02	9.07E-02	1.87E-02	9.58E-02	4.95E-02
2007	4.51E-02	2.41E-02	8.31E-02	1.54E-02	7.57E-02	3.90E-02
2008	4.59E-02	2.61E-02	7.95E-02	1.98E-02	9.59E-02	5.04E-02
2009	4.66E-02	2.65E-02	8.08E-02	1.24E-02	5.52E-02	2.71E-02
2010	4.74E-02	2.53E-02	8.71E-02	9.48E-03	4.35E-02	2.21E-02
2011	4.82E-02	2.30E-02	9.81E-02	3.86E-02	1.21E-01	7.44E-02
2012	4.90E-02	2.03E-02	1.13E-01	3.65E-02	1.30E-01	7.67E-02
2013	4.98E-02	1.76E-02	1.33E-01	1.87E-02	1.08E-01	5.28E-02

Table 16. Plot data for Figure 8, NR TDP unreliability trend.

FY	Regression Curve Data Points			Plot Trend Error Bar Points		
	Mean	Lower (5%)	Upper (95%)	Lower (5%)	Upper (95%)	Mean
1998				1.39E-03	2.87E-02	1.14E-02
1999				8.26E-03	5.11E-02	2.58E-02
2000				8.74E-05	1.47E-02	3.88E-03
2001				1.46E-03	2.97E-02	1.15E-02
2002				8.87E-05	1.45E-02	3.76E-03
2003				6.63E-05	1.44E-02	3.83E-03
2004	8.08E-03	2.78E-03	2.32E-02	1.67E-04	1.49E-02	3.92E-03
2005	7.72E-03	3.13E-03	1.90E-02	8.10E-03	5.20E-02	2.63E-02
2006	7.38E-03	3.45E-03	1.57E-02	8.67E-05	1.44E-02	3.88E-03
2007	7.06E-03	3.70E-03	1.34E-02	1.45E-03	2.90E-02	1.13E-02
2008	6.75E-03	3.77E-03	1.21E-02	8.92E-05	1.48E-02	3.92E-03
2009	6.45E-03	3.60E-03	1.15E-02	1.49E-03	2.89E-02	1.13E-02
2010	6.17E-03	3.23E-03	1.18E-02	1.57E-04	1.51E-02	4.14E-03
2011	5.90E-03	2.75E-03	1.26E-02	1.08E-04	1.49E-02	4.00E-03
2012	5.64E-03	2.28E-03	1.39E-02	1.43E-03	3.03E-02	1.16E-02
2013	5.39E-03	1.85E-03	1.56E-02	1.48E-04	1.51E-02	3.99E-03



Table 17. Plot data for Figure 9, standby TDP start demands trend.

FY	Demands	Reactor Years	Regression Curve Data Points			Plot Trend Error Bar Points		
			Mean	Lower (5%)	Upper (95%)	Lower (5%)	Upper (95%)	Mean
1998	1,541	97.0				1.52E+01	1.66E+01	1.59E+01
1999	1,424	97.0				1.40E+01	1.53E+01	1.47E+01
2000	1,473	97.3				1.45E+01	1.58E+01	1.51E+01
2001	1,380	97.0				1.36E+01	1.49E+01	1.42E+01
2002	1,397	97.0				1.38E+01	1.50E+01	1.44E+01
2003	1,542	97.0				1.52E+01	1.66E+01	1.59E+01
2004	1,463	97.3	1.47E+01	1.41E+01	1.55E+01	1.44E+01	1.57E+01	1.50E+01
2005	1,477	97.0	1.49E+01	1.43E+01	1.55E+01	1.46E+01	1.59E+01	1.52E+01
2006	1,449	97.0	1.51E+01	1.46E+01	1.56E+01	1.43E+01	1.56E+01	1.49E+01
2007	1,456	97.4	1.53E+01	1.48E+01	1.57E+01	1.43E+01	1.56E+01	1.50E+01
2008	1,445	98.3	1.55E+01	1.51E+01	1.59E+01	1.41E+01	1.54E+01	1.47E+01
2009	1,555	98.0	1.56E+01	1.53E+01	1.60E+01	1.52E+01	1.65E+01	1.59E+01
2010	1,594	98.0	1.58E+01	1.54E+01	1.63E+01	1.56E+01	1.69E+01	1.63E+01
2011	1,587	98.0	1.60E+01	1.55E+01	1.65E+01	1.55E+01	1.69E+01	1.62E+01
2012	1,524	98.3	1.62E+01	1.56E+01	1.68E+01	1.49E+01	1.62E+01	1.55E+01
2013	1,634	96.6	1.64E+01	1.57E+01	1.72E+01	1.62E+01	1.76E+01	1.69E+01
Total	23,940	1,558.0						

Table 18. Plot data for Figure 10, standby TDP run  $\leq 1$  hour run-hours trend.

FY	Hours	Reactor Years	Regression Curve Data Points			Plot Trend Error Bar Points		
			Mean	Lower (5%)	Upper (95%)	Lower (5%)	Upper (95%)	Mean
1998	1,541	97.0				1.52E+01	1.66E+01	1.59E+01
1999	1,424	97.0				1.40E+01	1.53E+01	1.47E+01
2000	1,473	97.3				1.45E+01	1.58E+01	1.51E+01
2001	1,380	97.0				1.36E+01	1.49E+01	1.42E+01
2002	1,397	97.0				1.38E+01	1.50E+01	1.44E+01
2003	1,542	97.0				1.52E+01	1.66E+01	1.59E+01
2004	1,463	97.3	1.47E+01	1.41E+01	1.55E+01	1.44E+01	1.57E+01	1.50E+01
2005	1,477	97.0	1.49E+01	1.43E+01	1.55E+01	1.46E+01	1.59E+01	1.52E+01
2006	1,449	97.0	1.51E+01	1.46E+01	1.56E+01	1.43E+01	1.56E+01	1.49E+01
2007	1,456	97.4	1.53E+01	1.48E+01	1.57E+01	1.43E+01	1.56E+01	1.50E+01
2008	1,445	98.3	1.55E+01	1.51E+01	1.59E+01	1.41E+01	1.54E+01	1.47E+01
2009	1,555	98.0	1.56E+01	1.53E+01	1.60E+01	1.52E+01	1.65E+01	1.59E+01
2010	1,594	98.0	1.58E+01	1.54E+01	1.63E+01	1.56E+01	1.69E+01	1.63E+01
2011	1,587	98.0	1.60E+01	1.55E+01	1.65E+01	1.55E+01	1.69E+01	1.62E+01
2012	1,524	98.3	1.62E+01	1.56E+01	1.68E+01	1.49E+01	1.62E+01	1.55E+01
2013	1,634	96.6	1.64E+01	1.57E+01	1.72E+01	1.62E+01	1.76E+01	1.69E+01
Total	23,940	1,558.0						

Table 19. Plot data for Figure 11, standby TDP run > 1 hour run-hours trend.

FY	Run Hours	Reactor Years	Regression Curve Data Points			Plot Trend Error Bar Points		
			Mean	Lower (5%)	Upper (95%)	Lower (5%)	Upper (95%)	Mean
1998	421	97.0				4.00E+00	4.71E+00	4.34E+00
1999	2,589	97.0				2.58E+01	2.75E+01	2.67E+01
2000	605	97.3				5.81E+00	6.65E+00	6.22E+00
2001	677	97.0				6.54E+00	7.43E+00	6.97E+00
2002	1,239	97.0				1.22E+01	1.34E+01	1.28E+01
2003	1,511	97.0				1.49E+01	1.62E+01	1.56E+01
2004	376	97.3	3.01E+00	2.36E+00	3.85E+00	3.54E+00	4.20E+00	3.86E+00
2005	281	97.0	3.09E+00	2.51E+00	3.80E+00	2.62E+00	3.20E+00	2.90E+00
2006	260	97.0	3.17E+00	2.66E+00	3.77E+00	2.42E+00	2.98E+00	2.69E+00
2007	275	97.4	3.25E+00	2.80E+00	3.76E+00	2.55E+00	3.12E+00	2.82E+00
2008	304	98.3	3.33E+00	2.92E+00	3.79E+00	2.81E+00	3.40E+00	3.10E+00
2009	366	98.0	3.41E+00	3.00E+00	3.88E+00	3.42E+00	4.07E+00	3.73E+00
2010	365	98.0	3.50E+00	3.05E+00	4.02E+00	3.41E+00	4.06E+00	3.73E+00
2011	423	98.0	3.59E+00	3.05E+00	4.22E+00	3.97E+00	4.67E+00	4.31E+00
2012	294	98.3	3.68E+00	3.03E+00	4.46E+00	2.71E+00	3.30E+00	2.99E+00
2013	389	96.6	3.77E+00	3.00E+00	4.74E+00	3.70E+00	4.38E+00	4.03E+00
Total	10,375	1,558.0						

Table 20. Plot data for Figure 12, standby TDP FTS events trend.

FY	Failures	Reactor Years	Regression Curve Data Points			Plot Trend Error Bar Points		
			Mean	Lower (5%)	Upper (95%)	Lower (5%)	Upper (95%)	Mean
1998	2	97.0				5.58E-03	6.85E-02	2.43E-02
1999	19	97.0				1.25E-01	2.77E-01	1.90E-01
2000	17	97.3				1.09E-01	2.53E-01	1.70E-01
2001	5	97.0				2.23E-02	1.09E-01	5.36E-02
2002	5	97.0				2.23E-02	1.09E-01	5.36E-02
2003	8	97.0				4.22E-02	1.47E-01	8.28E-02
2004	10	97.3	9.54E-02	6.36E-02	1.43E-01	5.63E-02	1.71E-01	1.02E-01
2005	8	97.0	9.27E-02	6.58E-02	1.31E-01	4.22E-02	1.47E-01	8.28E-02
2006	6	97.0	9.01E-02	6.76E-02	1.20E-01	2.87E-02	1.22E-01	6.33E-02
2007	9	97.4	8.76E-02	6.84E-02	1.12E-01	4.91E-02	1.58E-01	9.22E-02
2008	8	98.3	8.51E-02	6.79E-02	1.07E-01	4.17E-02	1.45E-01	8.18E-02
2009	15	98.0	8.27E-02	6.56E-02	1.04E-01	9.30E-02	2.29E-01	1.49E-01
2010	10	98.0	8.04E-02	6.19E-02	1.04E-01	5.59E-02	1.70E-01	1.01E-01
2011	7	98.0	7.81E-02	5.73E-02	1.06E-01	3.50E-02	1.33E-01	7.23E-02
2012	7	98.3	7.59E-02	5.26E-02	1.10E-01	3.49E-02	1.33E-01	7.21E-02
2013	5	96.6	7.37E-02	4.79E-02	1.14E-01	2.24E-02	1.09E-01	5.38E-02
Total	141	1,558.0						

Table 21. Plot data for Figure 13, standby TDP  $FTR \leq 1H$  events trend.

FY	Failures	Reactor Years	Regression Curve Data Points			Plot Trend Error Bar Points		
			Mean	Lower (5%)	Upper (95%)	Lower (5%)	Upper (95%)	Mean
1998	2	97.0				5.13E-03	6.30E-02	2.24E-02
1999	4	97.0				1.49E-02	8.82E-02	4.03E-02
2000	6	97.3				2.63E-02	1.12E-01	5.81E-02
2001	6	97.0				2.64E-02	1.12E-01	5.83E-02
2002	3	97.0				9.71E-03	7.58E-02	3.14E-02
2003	9	97.0				4.53E-02	1.46E-01	8.52E-02
2004	3	97.3	3.84E-02	1.38E-02	1.07E-01	9.69E-03	7.56E-02	3.13E-02
2005	3	97.0	3.57E-02	1.50E-02	8.48E-02	9.71E-03	7.58E-02	3.14E-02
2006	1	97.0	3.33E-02	1.61E-02	6.88E-02	1.58E-03	4.96E-02	1.34E-02
2007	6	97.4	3.10E-02	1.65E-02	5.80E-02	2.63E-02	1.12E-01	5.81E-02
2008	5	98.3	2.88E-02	1.60E-02	5.18E-02	2.03E-02	9.91E-02	4.87E-02
2009	6	98.0	2.68E-02	1.45E-02	4.96E-02	2.62E-02	1.11E-01	5.77E-02
2010	2	98.0	2.50E-02	1.24E-02	5.05E-02	5.09E-03	6.25E-02	2.22E-02
2011	4	98.0	2.33E-02	1.01E-02	5.36E-02	1.48E-02	8.74E-02	4.00E-02
2012	3	98.3	2.17E-02	8.03E-03	5.84E-02	9.60E-03	7.50E-02	3.10E-02
2013	0	96.6	2.02E-02	6.30E-03	6.46E-02	1.77E-05	3.52E-02	4.50E-03
Total	63	1,558.0						

Table 22. Plot data for Figure 14, standby TDP FTR>1H events trend.

FY	Failures	Reactor Years	Regression Curve Data Points			Plot Trend Error Bar Points		
			Mean	Lower (5%)	Upper (95%)	Lower (5%)	Upper (95%)	Mean
1998	3	97.0				9.13E-03	7.13E-02	2.95E-02
1999	0	97.0				1.66E-05	3.29E-02	4.21E-03
2000	0	97.3				1.65E-05	3.28E-02	4.20E-03
2001	1	97.0				1.48E-03	4.66E-02	1.26E-02
2002	0	97.0				1.66E-05	3.29E-02	4.21E-03
2003	0	97.0				1.66E-05	3.29E-02	4.21E-03
2004	4	97.3	1.48E-02	3.69E-03	5.90E-02	1.40E-02	8.27E-02	3.78E-02
2005	1	97.0	1.53E-02	4.71E-03	4.96E-02	1.48E-03	4.66E-02	1.26E-02
2006	2	97.0	1.58E-02	5.87E-03	4.26E-02	4.83E-03	5.93E-02	2.11E-02
2007	1	97.4	1.64E-02	7.08E-03	3.79E-02	1.48E-03	4.65E-02	1.26E-02
2008	2	98.3	1.70E-02	8.05E-03	3.58E-02	4.77E-03	5.86E-02	2.08E-02
2009	0	98.0	1.76E-02	8.45E-03	3.65E-02	1.64E-05	3.26E-02	4.18E-03
2010	0	98.0	1.82E-02	8.15E-03	4.06E-02	1.64E-05	3.26E-02	4.18E-03
2011	5	98.0	1.88E-02	7.36E-03	4.81E-02	1.91E-02	9.34E-02	4.60E-02
2012	4	98.3	1.95E-02	6.38E-03	5.95E-02	1.39E-02	8.20E-02	3.75E-02
2013	3	96.6	2.02E-02	5.40E-03	7.55E-02	9.16E-03	7.15E-02	2.96E-02
Total	26	1,558.0						

Table 23. Plot data for Figure 15, normally running TDP start demands trend.

FY	Demands	Reactor Years	Regression Curve Data Points			Plot Trend Error Bar Points		
			Mean	Lower (5%)	Upper (95%)	Lower (5%)	Upper (95%)	Mean
1998	77	20.0				3.17E+00	4.66E+00	3.86E+00
1999	79	20.0				3.24E+00	4.74E+00	3.94E+00
2000	79	20.1				3.23E+00	4.73E+00	3.92E+00
2001	78	20.0				3.22E+00	4.72E+00	3.92E+00
2002	78	20.0				3.21E+00	4.71E+00	3.91E+00
2003	78	20.0				3.21E+00	4.71E+00	3.90E+00
2004	78	20.1	3.93E+00	3.89E+00	3.98E+00	3.21E+00	4.70E+00	3.90E+00
2005	78	20.0	3.92E+00	3.88E+00	3.96E+00	3.21E+00	4.71E+00	3.91E+00
2006	78	20.0	3.90E+00	3.87E+00	3.93E+00	3.22E+00	4.72E+00	3.91E+00
2007	78	20.0	3.89E+00	3.86E+00	3.91E+00	3.22E+00	4.72E+00	3.91E+00
2008	78	20.1	3.87E+00	3.85E+00	3.90E+00	3.21E+00	4.71E+00	3.91E+00
2009	78	20.0	3.86E+00	3.83E+00	3.88E+00	3.21E+00	4.71E+00	3.91E+00
2010	76	20.0	3.84E+00	3.81E+00	3.87E+00	3.12E+00	4.60E+00	3.80E+00
2011	76	20.0	3.83E+00	3.79E+00	3.86E+00	3.12E+00	4.60E+00	3.81E+00
2012	76	20.1	3.81E+00	3.77E+00	3.85E+00	3.11E+00	4.59E+00	3.80E+00
2013	76	20.0	3.80E+00	3.75E+00	3.84E+00	3.12E+00	4.60E+00	3.80E+00
Total	1,243	320.2						

Table 24. Plot data for Figure 16, normally running TDP run hours trend.

FY	Run Hours	Reactor Years	Regression Curve Data Points			Plot Trend Error Bar Points		
			Mean	Lower (5%)	Upper (95%)	Lower (5%)	Upper (95%)	Mean
1998	331,157	20.0				1.65E+04	1.66E+04	1.66E+04
1999	335,022	20.0				1.67E+04	1.68E+04	1.68E+04
2000	335,022	20.1				1.67E+04	1.68E+04	1.67E+04
2001	335,295	20.0				1.67E+04	1.68E+04	1.68E+04
2002	335,432	20.0				1.67E+04	1.68E+04	1.68E+04
2003	335,432	20.0				1.67E+04	1.68E+04	1.68E+04
2004	335,417	20.1	1.69E+04	1.67E+04	1.70E+04	1.67E+04	1.68E+04	1.67E+04
2005	335,311	20.0	1.68E+04	1.66E+04	1.69E+04	1.67E+04	1.68E+04	1.68E+04
2006	335,356	20.0	1.67E+04	1.66E+04	1.69E+04	1.67E+04	1.68E+04	1.68E+04
2007	335,371	20.0	1.67E+04	1.66E+04	1.68E+04	1.67E+04	1.68E+04	1.68E+04
2008	335,371	20.1	1.66E+04	1.65E+04	1.67E+04	1.67E+04	1.68E+04	1.67E+04
2009	335,387	20.0	1.66E+04	1.65E+04	1.67E+04	1.67E+04	1.68E+04	1.68E+04
2010	327,166	20.0	1.65E+04	1.64E+04	1.66E+04	1.63E+04	1.64E+04	1.64E+04
2011	327,135	20.0	1.64E+04	1.63E+04	1.66E+04	1.63E+04	1.64E+04	1.64E+04
2012	327,196	20.1	1.64E+04	1.62E+04	1.65E+04	1.63E+04	1.64E+04	1.63E+04
2013	327,196	20.0	1.63E+04	1.62E+04	1.65E+04	1.63E+04	1.64E+04	1.64E+04
Total	5,328,266	320.2						



Table 25. Plot data for Figure 17, normally running TDP FTS events trend.

FY	Failures	Reactor Years	Regression Curve Data Points			Plot Trend Error Bar Points		
			Mean	Lower (5%)	Upper (95%)	Lower (5%)	Upper (95%)	Mean
1998	1	20.0				4.97E-03	1.56E-01	4.24E-02
1999	3	20.0				3.06E-02	2.39E-01	9.89E-02
2000	0	20.1				5.55E-05	1.10E-01	1.41E-02
2001	1	20.0				4.97E-03	1.56E-01	4.24E-02
2002	0	20.0				5.55E-05	1.10E-01	1.41E-02
2003	0	20.0				5.55E-05	1.10E-01	1.41E-02
2004	0	20.1	2.97E-02	9.95E-03	8.89E-02	5.55E-05	1.10E-01	1.41E-02
2005	3	20.0	2.83E-02	1.12E-02	7.17E-02	3.06E-02	2.39E-01	9.89E-02
2006	0	20.0	2.70E-02	1.23E-02	5.89E-02	5.55E-05	1.10E-01	1.41E-02
2007	1	20.0	2.57E-02	1.32E-02	4.99E-02	4.97E-03	1.56E-01	4.24E-02
2008	0	20.1	2.44E-02	1.34E-02	4.44E-02	5.55E-05	1.10E-01	1.41E-02
2009	1	20.0	2.33E-02	1.28E-02	4.23E-02	4.97E-03	1.56E-01	4.24E-02
2010	0	20.0	2.21E-02	1.14E-02	4.30E-02	5.55E-05	1.10E-01	1.41E-02
2011	0	20.0	2.11E-02	9.68E-03	4.60E-02	5.55E-05	1.10E-01	1.41E-02
2012	1	20.1	2.01E-02	7.95E-03	5.07E-02	4.96E-03	1.56E-01	4.23E-02
2013	0	20.0	1.91E-02	6.41E-03	5.69E-02	5.55E-05	1.10E-01	1.41E-02
Total	11	320.2						

Table 26. Plot data for Figure 18, normally running TDP FTR events trend.

FY	Failures	Reactor Years	Regression Curve Data Points			Plot Trend Error Bar Points		
			Mean	Lower (5%)	Upper (95%)	Lower (5%)	Upper (95%)	Mean
1998	3	20.0				4.87E-02	3.80E-01	1.57E-01
1999	4	20.0				7.47E-02	4.42E-01	2.02E-01
2000	3	20.1				4.86E-02	3.79E-01	1.57E-01
2001	4	20.0				7.47E-02	4.42E-01	2.02E-01
2002	3	20.0				4.87E-02	3.80E-01	1.57E-01
2003	2	20.0				2.57E-02	3.16E-01	1.12E-01
2004	7	20.1	2.08E-01	1.31E-01	3.32E-01	1.63E-01	6.18E-01	3.36E-01
2005	5	20.0	2.09E-01	1.41E-01	3.10E-01	1.03E-01	5.03E-01	2.47E-01
2006	3	20.0	2.10E-01	1.50E-01	2.92E-01	4.87E-02	3.80E-01	1.57E-01
2007	3	20.0	2.10E-01	1.59E-01	2.79E-01	4.87E-02	3.80E-01	1.57E-01
2008	3	20.1	2.11E-01	1.64E-01	2.72E-01	4.86E-02	3.79E-01	1.57E-01
2009	3	20.0	2.12E-01	1.64E-01	2.73E-01	4.87E-02	3.80E-01	1.57E-01
2010	6	20.0	2.12E-01	1.60E-01	2.81E-01	1.32E-01	5.62E-01	2.92E-01
2011	4	20.0	2.13E-01	1.53E-01	2.96E-01	7.47E-02	4.42E-01	2.02E-01
2012	4	20.1	2.13E-01	1.44E-01	3.16E-01	7.45E-02	4.41E-01	2.02E-01
2013	6	20.0	2.14E-01	1.35E-01	3.40E-01	1.32E-01	5.62E-01	2.92E-01
Total	63	320.2						

## 9. REFERENCES

1. Nuclear Regulatory Commission, *Component Reliability Data Sheets Update 2010*, January 2012, <http://nrcoe.inl.gov/resultsdb/publicdocs/AvgPerf/ComponentReliabilityDataSheets2010.pdf>
2. S.A. Eide et al., *Industry-Average Performance for Components and Initiating Events at U.S. Commercial Nuclear Power Plants*, NUREG/CR-6928, Nuclear Regulatory Commission, February 2007.
3. C.L. Atwood et al., *Handbook of Parameter Estimation for Probabilistic Risk Assessment*, NUREG/CR-6823, September 2003.