



# **F3502-0259-EB-INL71155- FMF Room 20 Outer Flow Tube Metal Mold Pallet Assembly-Drawing**

March 1988

*Changing the World's Energy Future*

R. Olson



#### **DISCLAIMER**

This information was prepared as an account of work sponsored by an agency of the U.S. Government. Neither the U.S. Government nor any agency thereof, nor any of their employees, makes any warranty, expressed or implied, or assumes any legal liability or responsibility for the accuracy, completeness, or usefulness, of any information, apparatus, product, or process disclosed, or represents that its use would not infringe privately owned rights. References herein to any specific commercial product, process, or service by trade name, trade mark, manufacturer, or otherwise, does not necessarily constitute or imply its endorsement, recommendation, or favoring by the U.S. Government or any agency thereof. The views and opinions of authors expressed herein do not necessarily state or reflect those of the U.S. Government or any agency thereof.

# **F3502-0259-EB-INL71155-FMF Room 20 Outer Flow Tube Metal Mold Pallet Assembly-Drawing**

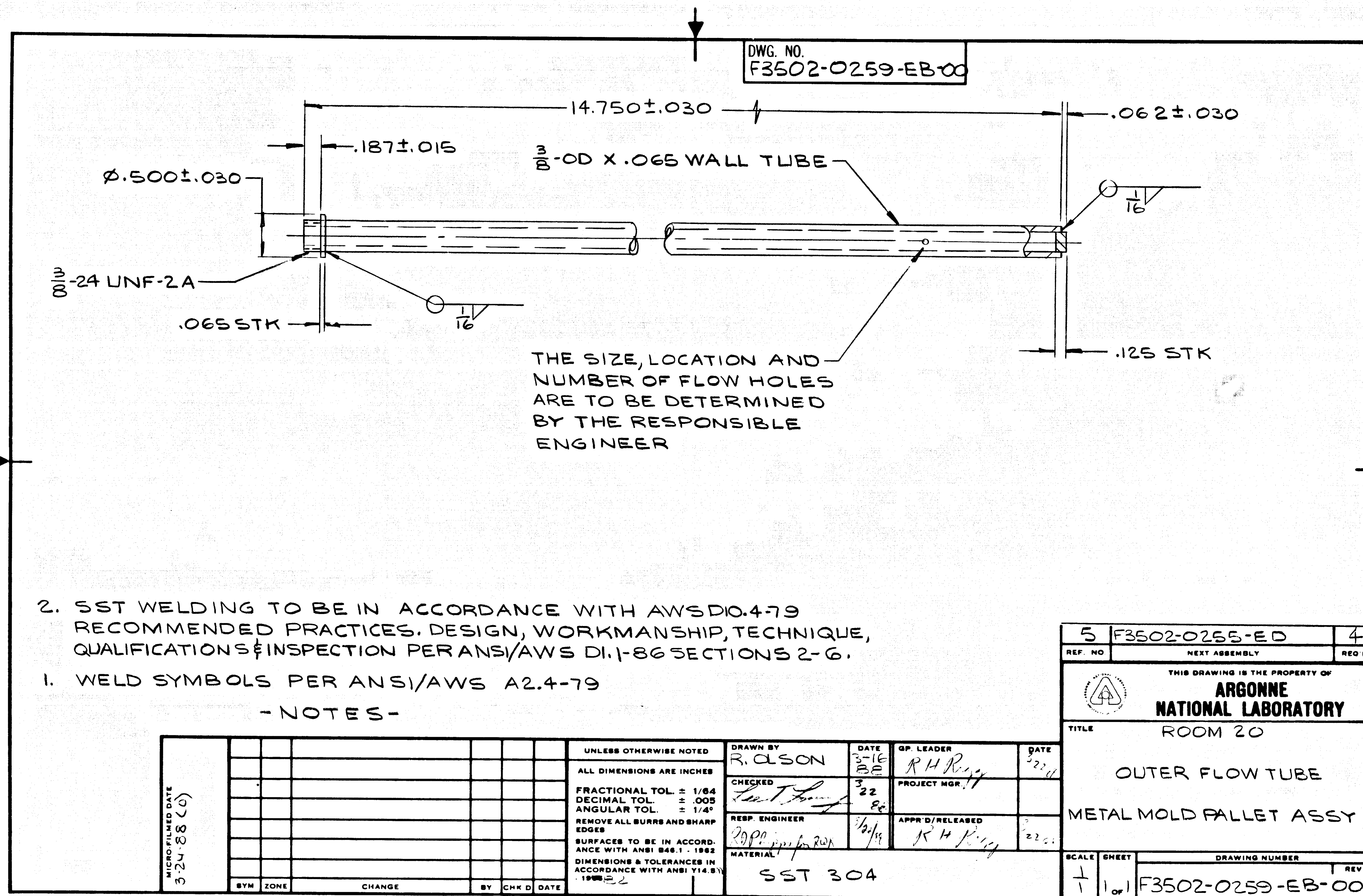
**R. Olson**

**March 1988**

**Idaho National Laboratory  
Idaho Falls, Idaho 83415**

**<http://www.inl.gov>**

**Prepared for the  
U.S. Department of Energy  
Under DOE Idaho Operations Office  
Contract DE-AC07-05ID14517**



**UNCONTROLLED MICROFILM COPY**  
**MAY NOT BE CURRENT**